



PARK APARTMENTS LAS VEGAS, NEVADA

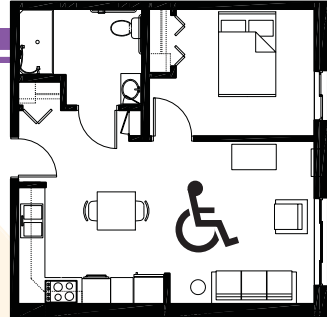
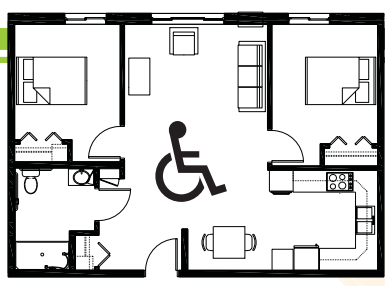
Accessible, Affordable Apartments For Adults With Qualifying Disabilities

AFFORDABLE

- Qualifying households pay 30% of adjusted gross monthly income for rent
- Rent is subsidized by the U.S. Department of Housing and Urban Development (HUD)-Income limits apply
- Rent includes: Heat, water, sewer, trash & snow removal

BASIC QUALIFICATIONS

- One household member must have a qualifying disability
- Applicants are screened for credit, rental and criminal history
- Households must be income qualified (income limits apply and security deposit required)



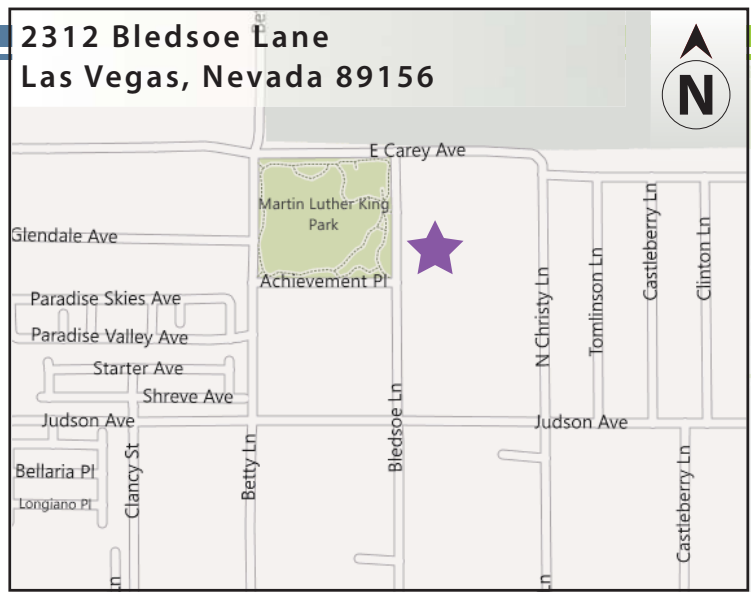
APARTMENT FEATURES

- 21 one and two-bedroom apartments
- Large, accessible bathrooms
- Spacious accessible kitchens
- Carpeted bedroom & living room
- Generous closet & storage space
- Roll-in showers

BUILDING FEATURES

- Accessible main entrance
- Controlled access entry system
- Elevator service
- Large community room, outdoor terrace and grill
- On-site laundry facilities

2312 Bledsoe Lane
Las Vegas, Nevada 89156



CONVENIENT NEIGHBORHOOD LOCATION

- Grocery stores, shopping & restaurants
- Banking Services
- Hospitals, medical & professional clinics
- Churches

For more information or to request a housing application, please call

- toll-free 1-800-466-7722
- tty/tdd 1-800-627-3529

Apply online www.accessiblespace.org

Accessible Space, Inc. (ASI)

2550 University Avenue West, Suite 330 North
Saint Paul, Minnesota 55114

