



Accessible Space, Inc.

2550 University Avenue West, Suite 330 N | St. Paul, Minnesota 55114

OUR MISSION HOUSING WITH CARE

The mission of Accessible Space, Inc. (ASI) is to provide accessible, affordable, assisted, supportive and independent living opportunities for persons with physical disabilities and brain injuries as well as seniors. This mission is accomplished through the development and cost-effective management of accessible, affordable housing, assisted/supportive/independent living and rehabilitation services.

ACKNOWLEDGEMENTS FUNDING AND SUPPORT

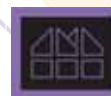
Accessible Space, Inc. (ASI) gratefully acknowledges the following organizations for their funding and/or support:

The U.S. Department of Urban Development (HUD); The Otto Bremer Foundation; The Minnesota Department of Human Services; and The Stearns County Department of Social Services.



Committed to the success of equal housing opportunities throughout the nation

ASI



Accessible Space, Inc. (ASI):
Sponsor, Developer and
Management Agent

QUARRY HEIGHTS APARTMENTS ST. CLOUD, MINNESOTA

***Accessible, Affordable Apartments For
Adults With Qualifying Disabilities***

2051 Quarry Road
St. Cloud, Minnesota 56301



Accessible Space, Inc.
HOUSING WITH CARE



QUARRY HEIGHTS APARTMENTS ST.CLOUD, MINNESOTA

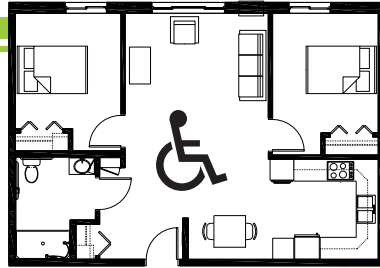
Accessible, Affordable Apartments For Adults With Qualifying Disabilities

AFFORDABLE

- Qualifying households pay 30% of adjusted gross monthly income for rent
- Rent is subsidized by the U.S. Department of Housing and Urban Development (HUD)-Income limits apply
- Rent includes: Heat, water, sewer, trash & snow removal

BASIC QUALIFICATIONS

- One household member must have a qualifying disability
- Applicants are screened for credit, rental and criminal history
- Households must be income qualified (income limits apply and security deposit required)

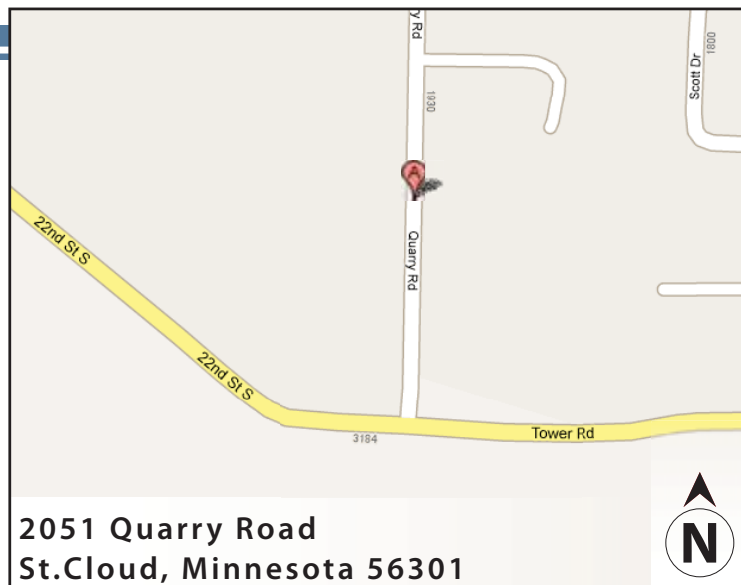


APARTMENT FEATURES

- 24 accessible, one and two bedroom apartments
- Wheelchair accessible, spacious kitchen
- Large accessible bathrooms
- Generous closet & storage space
- Level-action door handles
- Roll-in showers

BUILDING FEATURES

- Open entry & lobby
- Controlled access entry system
- Large community room and library
- On-site laundry facilities
- Approved pets welcome! (with deposit)
- Raised electrical light switches
- Approved pets welcome!



CONVENIENT NEIGHBORHOOD LOCATION

- Grocery stores, shopping & restaurants
- Banking Services
- Hospitals, medical & professional clinics
- Churches

For more information or to request a housing application, please call

- toll-free 1-800-466-7722
- tty/tdd 1-800-627-3529

Apply online www.accessiblespace.org

Accessible Space, Inc. (ASI)

2550 University Avenue West, Suite 330 North
Saint Paul, Minnesota 55114

