



# Accessible Space, Inc.

2550 University Avenue West, Suite 330 N | St. Paul, Minnesota 55114

## OUR MISSION HOUSING WITH CARE

The mission of Accessible Space, Inc. (ASI) is to provide accessible, affordable, assisted/supportive and independent living opportunities for persons with physical disabilities and brain injuries, as well as seniors. This mission is accomplished through the development and cost-effective management of accessible, affordable housing, as well as the provision of assisted/supportive living and rehabilitation services.

## ACKNOWLEDGEMENTS FUNDING AND SUPPORT

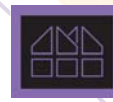
Accessible Space, Inc. (ASI) gratefully acknowledges the following organizations for their funding and/or support:

The U.S. Department of Housing and Urban Development (HUD); The City of Greeley Urban Renewal Authority HOME Funds; and the Colorado Division of Housing.



Committed to the success of equal housing opportunities throughout the nation

ASI



Accessible Space, Inc. (ASI): Sponsor, Developer and Management Agent

## FOX RUN APARTMENTS GREELEY, COLORADO



***Accessible, Affordable Apartments For Adults With Qualifying Disabilities***

1300 60th Avenue  
Greeley, Colorado 80634



**Accessible Space, Inc.**

HOUSING WITH CARE

## FOX RUN APARTMENTS GREELEY, COLORADO

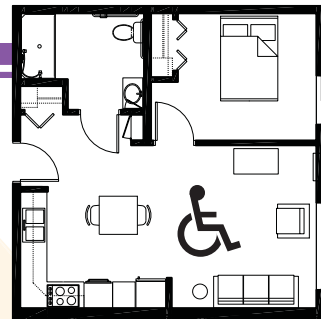
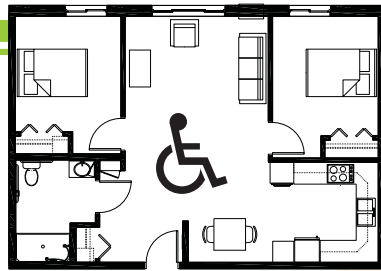
*Accessible, Affordable Apartments For Adults With Qualifying Disabilities*

### AFFORDABLE

- Qualifying households pay 30% of adjusted gross monthly income for rent
- Rent is subsidized by the U.S. Department of Housing and Urban Development (HUD)-Income limits apply
- Rent includes: Heat, water, sewer, trash & snow removal

### BASIC QUALIFICATIONS

- One household member must have a qualifying disability
- Applicants are screened for credit, rental and criminal history
- Households must be income qualified (income limits apply and security deposit required)

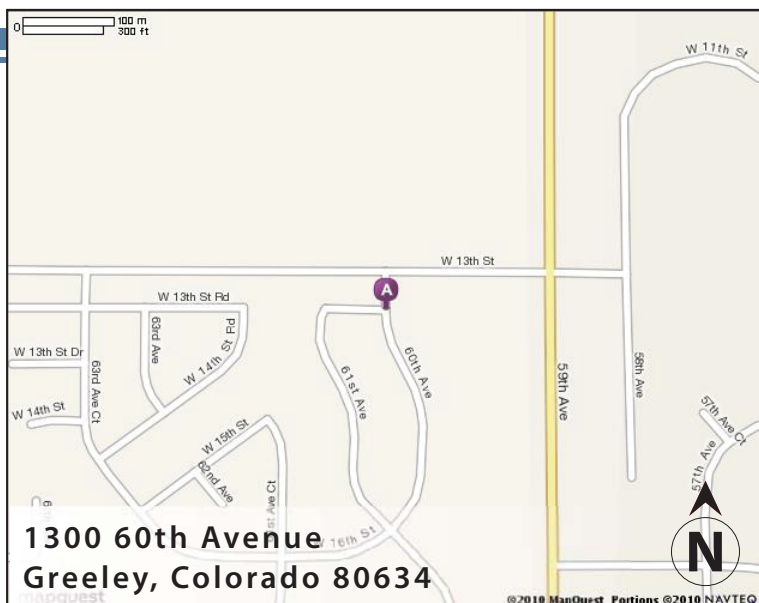


### APARTMENT FEATURES

- 23 accessible, one & two bedroom apartments
- Wheelchair accessible, spacious kitchen
- Large accessible bathrooms
- Carpeted bedroom and living room
- Generous closet and storage space
- Roll-in showers

### BUILDING FEATURES

- Controlled access entry system
- Spacious community room
- Outdoor patio and gas grill
- On-site laundry facilities
- Approved pets welcome!



### CONVENIENT NEIGHBORHOOD LOCATION

- Grocery stores, shopping & restaurants
- Banking Services
- Hospitals, medical & professional clinics
- Churches

**For more information or to request a housing application, please call**

- toll-free 1-800-466-7722
- tty/tdd 1-800-627-3529

**Apply online** [www.accessiblespace.org](http://www.accessiblespace.org)

**Accessible Space, Inc. (ASI)**

2550 University Avenue West, Suite 330 North  
Saint Paul, Minnesota 55114

