



Accessible Space, Inc.

2550 University Avenue West, Suite 330 N | St. Paul, Minnesota 55114

OUR MISSION HOUSING WITH CARE

The mission of Accessible Space, Inc. (ASI) is to provide accessible, affordable, assisted, supportive and independent living opportunities for persons with physical disabilities and brain injuries as well as seniors. This mission is accomplished through the development and cost-effective management of accessible, affordable housing, assisted/supportive/independent living and rehabilitation services.

ACKNOWLEDGEMENTS FUNDING AND SUPPORT

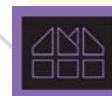
Accessible Space, Inc. (ASI) gratefully acknowledges the following organizations for their funding and/or support:

The U.S. Department of Housing and Urban Development.



Committed to the success of equal housing opportunities throughout the nation

ASI



Accessible Space, Inc. (ASI):
Sponsor, Developer and
Management Agent

BLACKBIRD APARTMENTS KANSAS CITY, KANSAS



***Accessible, Affordable Apartments For
Adults With Qualifying Disabilities***

1455 Meadlark Lane
Kansas City, Kansas 66102



Accessible Space, Inc.
HOUSING WITH CARE

BLACKBIRD APARTMENTS KANSAS CITY, KANSAS

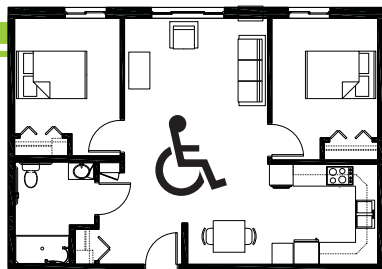
Accessible, Affordable Apartments For Adults With Qualifying Disabilities

AFFORDABLE

- Qualifying households pay 30% of adjusted gross monthly income for rent
- Rent is subsidized by the U.S. Department of Housing and Urban Development (HUD)-Income limits apply
- Rent includes: Heat, water, sewer and trash

BASIC QUALIFICATIONS

- One household member must have a qualifying disability
- Applicants are screened for credit, rental and criminal history
- Households must be income qualified (income limits apply and security deposit required)



APARTMENT FEATURES

- 32 wheelchair accessible, 1 & 2 bedroom apartments
- Accessible, spacious kitchen
- Large accessible bathroom
- Carpeted bedroom and living room
- Generous closet & storage space
- Level-action door handles
- Wheel-in showers

BUILDING FEATURES

- Open entry & lobby
- Controlled access entry system
- Outdoor patio
- Elevator service
- multi-purpose community room
- Raised electrical outlets & lowered light switches
- On-site laundry facilities

1455 Meadowlark Lane
Kansas City, Kansas 66102



CONVENIENT NEIGHBORHOOD LOCATION

- Grocery stores, shopping & restaurants
- Banking Services
- Hospitals, medical & professional clinics
- Churches

For more information or to request a housing application, please call

- toll-free 1-800-466-7722
- tty/tdd 1-800-627-3529

Apply online www.accessiblespace.org

Accessible Space, Inc. (ASI)

2550 University Avenue West, Suite 330 North
Saint Paul, Minnesota 55114

