



# Accessible Space, Inc.

2550 University Avenue West, Suite 330 N | St. Paul, Minnesota 55114

## OUR MISSION HOUSING WITH CARE

The mission of Accessible Space, Inc. (ASI) is to provide accessible, affordable, assisted, supportive and independent living opportunities for persons with physical disabilities and brain injuries as well as seniors. This mission is accomplished through the development and cost-effective management of accessible, affordable housing, assisted/supportive/independent living and rehabilitation services.

## ACKNOWLEDGEMENTS FUNDING AND SUPPORT

Accessible Space, Inc. (ASI) gratefully acknowledges the following organizations for their funding and/or support:

The U.S. Department of Housing and Urban Development (HUD); The Federal Home Loan Bank of Des' Moines' Affordable Housing Program/U.S. Bank; Kansas Housing Resource Corporation; and the Topeka Community Foundation. The National Multiple Sclerosis Society was the Co-Sponsor of The Melissa Anne Hanger Apartments.

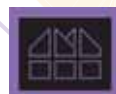


*Mid America Chapter*



Committed to the success of equal housing opportunities throughout the nation

ASI



Accessible Space, Inc. (ASI): Co-Sponsor, Developer and Management Agent

## MELISSA ANNE HANGER APARTMENTS TOPEKA, KANSAS



***Accessible, Affordable Apartments For Adults With Qualifying Disabilities***

2230 28th Street South East, Topeka, Kansas 66605



Accessible Space, Inc. HOUSING WITH CARE

## TOPEKA, KANSAS

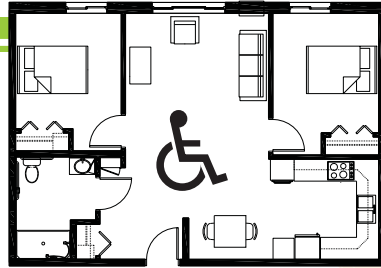
## Accessible, Affordable Apartments For Adults With Qualifying Disabilities

## AFFORDABLE

- Qualifying households pay 30% of adjusted gross monthly income for rent
- Rent is subsidized by the U.S. Department of Housing and Urban Development (HUD)-Income limits apply
- Rent includes: Water, sewer and trash

## BASIC QUALIFICATIONS

- One household member must have a qualifying disability
- Applicants are screened for credit, rental and criminal history
- Households must be income qualified (income limits apply and security deposit required)

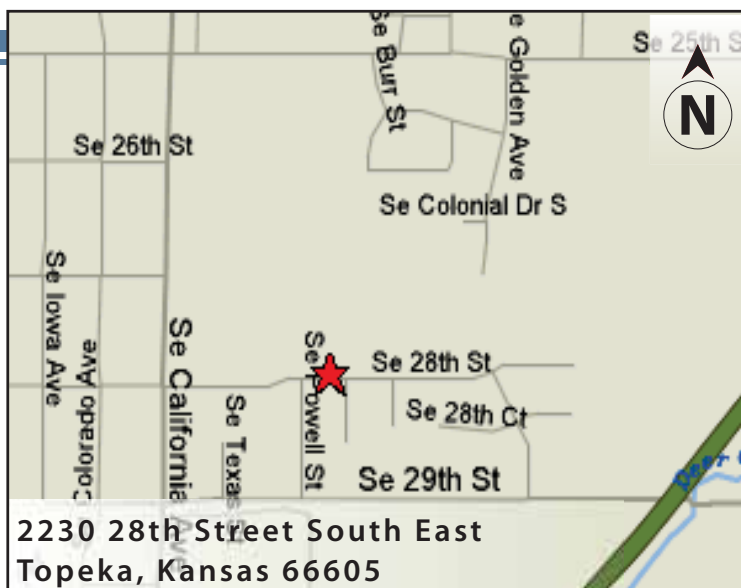


## APARTMENT FEATURES

- 21 accessible, 1 & 2 bedroom apartments
- Wheelchair accessible, spacious kitchens
- Large, accessible bathroom
- Air conditioned apartments
- Carpeted bedrooms and living room
- Raised electrical outlets
- Wheel-in showers

## BUILDING FEATURES

- Open entry and lobby
- Controlled access entry system
- Community room & library
- Elevator service
- On-site laundry facilities
- Lever-action door handles
- Approved pets welcome!



## CONVENIENT NEIGHBORHOOD LOCATION

- Grocery stores, shopping & restaurants
- Banking Services
- Hospitals, medical & professional clinics
- Churches

For more information or to request a housing application, please call

- ↳ toll-free 1-800-466-7722
- ↳ tty/tdd 1-800-627-3529

**Apply online** [www.accessiblespace.org](http://www.accessiblespace.org)

**Accessible Space, Inc. (ASI)**

2550 University Avenue West, Suite 330 North  
Saint Paul, Minnesota 55114

