



Accessible Space, Inc.

2550 University Avenue West, Suite 330 N | St. Paul, Minnesota 55114

OUR MISSION HOUSING WITH CARE

The mission of Accessible Space, Inc. (ASI) is to provide accessible, affordable, assisted, supportive and independent living opportunities for persons with physical disabilities and brain injuries as well as seniors. This mission is accomplished through the development and cost-effective management of accessible, affordable housing, assisted/supportive/independent living and rehabilitation services.

ACKNOWLEDGEMENTS FUNDING AND SUPPORT

Accessible Space, Inc. (ASI) gratefully acknowledges the following organizations for their funding and/or support:

U.S. Department of Housing and Urban Development (HUD); Bloomington, Minnesota Housing Redevelopment Authority; St. Paul, Minnesota Housing Redevelopment Authority; The National Ataxia Foundation.



Committed to the success of equal housing opportunities throughout the nation

ASI



Accessible Space, Inc. (ASI): Sponsor, Developer and Management Agent

HENRY COURTS BLOOMINGTON AND SAINT PAUL, MINNESOTA



Henry Courts I

Accessible, Affordable Apartments For Adults With Qualifying Disabilities

Henry Courts I	Henry Courts II
8650 Aldrich Ave. S.	132-154 Western Ave. S.
Bloomington, MN 55420	Saint Paul, MN 55102



Accessible Space, Inc.

HOUSING WITH CARE

HENRY COURTS BLOOMINGTON AND SAINT PAUL, MINNESOTA

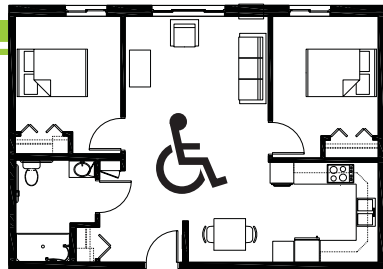
Accessible, Affordable Apartments For Adults With Qualifying Disabilities

AFFORDABLE

- Qualifying households pay 30% of adjusted gross monthly income for rent
- Rent is subsidized by the U.S. Department of Housing and Urban Development (HUD)-Income limits apply
- Rent includes: Heat, water, sewer, trash & snow removal

BASIC QUALIFICATIONS

- One household member must have a qualifying disability
- Applicants are screened for credit, rental and criminal history
- Households must be income qualified (income limits apply and security deposit required)



APARTMENT FEATURES

- 20 units of one-level townhomes
- Spacious accessible kitchens
- Large accessible bathrooms
- Air conditioning & window blinds
- Carpeted bedroom and living room
- Generous closet/storage space
- Roll-in showers

BUILDING FEATURES

- Accessible main entrance
- Controlled access entry system
- Convenient neighborhood location
- Community room, outdoor courtyard
- On-site laundry facilities
- Off-street parking
- Approved Pets Welcome!



CONVENIENT NEIGHBORHOOD LOCATION

- Grocery stores, shopping & restaurants
- Banking Services
- Hospitals, medical & professional clinics
- Churches

For more information or to request a housing application, please call

- toll-free 1-800-466-7722
- tty/tdd 1-800-627-3529

Apply online www.accessiblespace.org

Accessible Space, Inc. (ASI)

2550 University Avenue West, Suite 330 North
Saint Paul, Minnesota 55114

