



Accessible Space, Inc.

2550 University Avenue West, Suite 330 N | St. Paul, Minnesota 55114

OUR MISSION HOUSING WITH CARE

The mission of Accessible Space, Inc. (ASI) is to provide accessible, affordable, assisted, supportive and independent living opportunities for persons with physical disabilities and brain injuries as well as seniors. This mission is accomplished through the development and cost-effective management of accessible, affordable housing, as well as the provision of assisted/supportive living and rehabilitation services.

ACKNOWLEDGEMENTS FUNDING AND SUPPORT

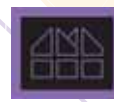
Accessible Space, Inc. (ASI) gratefully acknowledges the following organizations for their funding and/or support:

The U.S. Department of Housing and Urban Development (HUD); St. Mary's Medical Center; The Van Gorden Foundation; The Northeastern Minnesota Initiative Fund; The Emma B. Howe Memorial Foundation; The Ordean Foundation; Minnesota Department of Human Services; St. Louis County Department of Social Services; and The City of Duluth, Minnesota. Polinsky Medical Rehabilitation Center, Co-sponsor.



Committed to the success of equal housing opportunities throughout the nation

ASI



Accessible Space, Inc. (ASI):
Sponsor, Developer and
Management Agent

SUPERIOR VIEW APARTMENTS DULUTH, MINNESOTA



***Accessible, Affordable Apartments For
Adults With Qualifying Disabilities***

1022 Junction Avenue
Duluth, Minnesota 55812



Accessible Space, Inc.

HOUSING WITH CARE

SUPERIOR VIEW APARTMENTS DULUTH, MINNESOTA

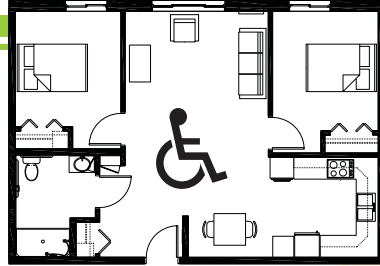
Accessible, Affordable Apartments For Adults With Qualifying Disabilities

AFFORDABLE

- Qualifying households pay 30% of adjusted gross monthly income for rent
- Rent is subsidized by the U.S. Department of Housing and Urban Development (HUD)-Income limits apply
- Rent includes: Heat, water, sewer, trash & snow removal

BASIC QUALIFICATIONS

- One household member must have a qualifying disability
- Applicants are screened for credit, rental and criminal history
- Households must be income qualified (income limits apply and security deposit required)

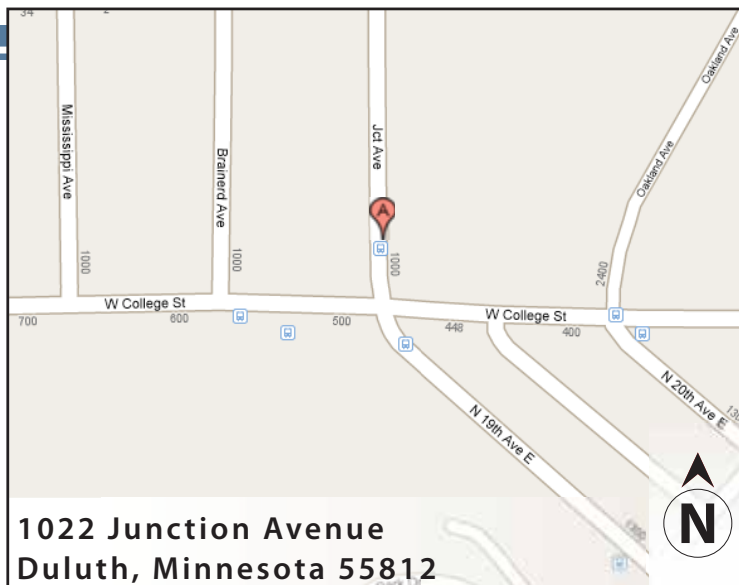


APARTMENT FEATURES

- 24 accessible, 1 and 2-bedroom apartments
- Spacious, wheelchair accessible kitchens
- Large accessible bathrooms
- Generous closet & storage space
- Raised electrical outlets & lowered light switches
- Roll-in showers

BUILDING FEATURES

- Open entry & lobby
- Controlled access entry system
- Elevator service
- Community room & library
- On-site laundry facilities
- Large, multi-purpose meeting room
- Approved pets welcome! (with deposit)
- Lever-action door handles



CONVENIENT NEIGHBORHOOD LOCATION

- Grocery stores, shopping & restaurants
- Banking Services
- Hospitals, medical & professional clinics
- Churches

For more information or to request a housing application, please call

- toll-free 1-800-466-7722
- tty/tdd 1-800-627-3529

Apply online www.accessiblespace.org

Accessible Space, Inc. (ASI)

2550 University Avenue West, Suite 330 North
Saint Paul, Minnesota 55114

