



Accessible Space, Inc.

2550 University Avenue West, Suite 330 N | St. Paul, Minnesota 55114

OUR MISSION HOUSING WITH CARE

The mission of Accessible Space, Inc. (ASI) is to provide accessible, affordable, assisted, supportive and independent living opportunities for persons with physical disabilities and brain injuries as well as seniors. This mission is accomplished through the development and cost-effective management of accessible, affordable housing, as well as the provision of assisted/supportive living and rehabilitation services.

ACKNOWLEDGEMENTS FUNDING AND SUPPORT

Accessible Space, Inc. (ASI) gratefully acknowledges the following organizations for their funding and/or support:

The U.S. Department of Housing and Urban Development (HUD); U.S. Bank and Federal Home Loan Bank of Des Moines' Affordable Housing Program; Minnesota Housing Finance Agency; The Bush Foundation; U.S. Bancorp Foundation; and The Beim Foundation.



Committed to the success of equal housing opportunities throughout the nation

ASI



Accessible Space, Inc. (ASI):
Sponsor, Developer and
Management Agent

REDRUTH VALLEY APARTMENTS DULUTH, MINNESOTA

***Accessible, Affordable Apartments For
Adults With Qualifying Disabilities***

6801 Redruth Street
Duluth, Minnesota 55807



Accessible Space, Inc.

HOUSING WITH CARE



REDRUTH VALLEY APARTMENTS DULUTH, MINNESOTA

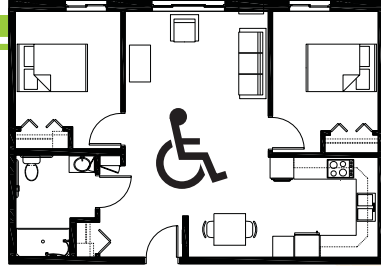
Accessible, Affordable Apartments For Adults With Qualifying Disabilities

AFFORDABLE

- Qualifying households pay 30% of adjusted gross monthly income for rent
- Rent is subsidized by the U.S. Department of Housing and Urban Development (HUD)-Income limits apply
- Rent includes: Heat, water, sewer, trash & snow removal

BASIC QUALIFICATIONS

- One household member must have a qualifying disability
- Applicants are screened for credit, rental and criminal history
- Households must be income qualified (income limits apply and security deposit required)



APARTMENT FEATURES

- 18 accessible, one and two bedroom apartments
- Spacious, accessible kitchens
- Large, accessible bathrooms
- Window blinds
- Carpeted bedroom and living room
- Generous closet/storage space
- Roll-in showers

BUILDING FEATURES

- Accessible main entrance
- Controlled access entry system
- Convenient neighborhood location
- Community room, outdoor terrace & grill
- On-site laundry facilities
- Off-street parking

6801 Redruth Street
Duluth, Minnesota 55807



CONVENIENT NEIGHBORHOOD LOCATION

- Grocery stores, shopping & restaurants
- Banking Services
- Hospitals, medical & professional clinics
- Churches

For more information or to request a housing application, please call

- toll-free 1-800-466-7722
- tty/tdd 1-800-627-3529

Apply online www.accessiblespace.org

Accessible Space, Inc. (ASI)

2550 University Avenue West, Suite 330 North
Saint Paul, Minnesota 55114

