



# Accessible Space, Inc.

2550 University Avenue West, Suite 330 N | St. Paul, Minnesota 55114

## OUR MISSION HOUSING WITH CARE

The mission of Accessible Space, Inc. (ASI) is to provide accessible, affordable, assisted, supportive and independent living opportunities for persons with physical disabilities and brain injuries as well as seniors. This mission is accomplished through the development and cost-effective management of accessible, affordable housing, as well as the provision of assisted/supportive living and rehabilitation services.

## ACKNOWLEDGEMENTS FUNDING AND SUPPORT

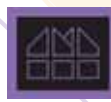
Accessible Space, Inc. (ASI) gratefully acknowledges the following organizations for their funding and/or support:

The U.S. Department of Housing and Urban Development (HUD); Federal Home Loan Bank (FHLB) of Des Moines' Affordable Housing Program/U.S. Bank; City of Duluth HOME/Community Development Block Grant (CDBG) Program; City of Duluth Home Investment Fund Program. The National Handicap Housing Institute was the Co-Sponsor for Burke Apartments.



Committed to the success of equal housing opportunities throughout the nation

ASI



Accessible Space, Inc. (ASI): Co-Sponsor, Developer and Management Agent

## BURKE APARTMENTS DULUTH, MINNESOTA



***Accessible, Affordable Apartments For Adults With Qualifying Disabilities***

720 Maple Grove Road  
Duluth, Minnesota 55811



**Accessible Space, Inc.**

HOUSING WITH CARE

# AccessibleSpace, Inc.

## BURKE APARTMENTS DULUTH, MINNESOTA

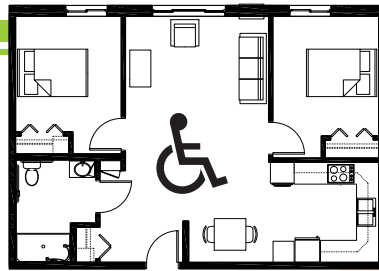
*Accessible, Affordable Apartments For Adults With Qualifying Disabilities*

### AFFORDABLE

- Qualifying households pay 30% of adjusted gross monthly income for rent
- Rent is subsidized by the U.S. Department of Housing and Urban Development (HUD)-Income limits apply
- Rent includes: Heat, water, sewer and trash

### BASIC QUALIFICATIONS

- One household member must have a qualifying disability
- Applicants are screened for credit, rental and criminal history
- Households must be income qualified (income limits apply and security deposit required)

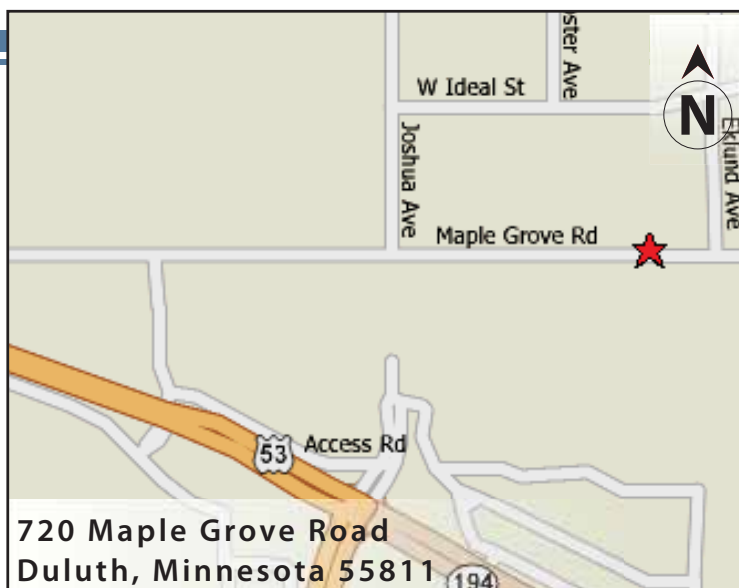


### APARTMENT FEATURES

- 20 accessible, 1 & 2 bedroom apartments
- Wheelchair accessible, spacious kitchen
- Large accessible bathroom
- Carpeted bedroom and living room
- Generous closet & storage space
- Wheel-in showers
- Raised Electrical outlets
- Air conditioned apartments

### BUILDING FEATURES

- Open entry & lobby
- Controlled access entry system
- Elevator service
- Multi-purpose community room
- Lever-action handles
- Lowered light switches



### CONVENIENT NEIGHBORHOOD LOCATION

- Grocery stores, shopping & restaurants
- Banking Services
- Hospitals, medical & professional clinics
- Churches

For more information or to request a housing application, please call

- toll-free 1-800-466-7722
- tty/tdd 1-800-627-3529

Apply online [www.accessiblespace.org](http://www.accessiblespace.org)

Accessible Space, Inc. (ASI)

2550 University Avenue West, Suite 330 North  
Saint Paul, Minnesota 55114

