



Accessible Space, Inc.

2550 University Avenue West, Suite 330 N | St. Paul, Minnesota 55114

OUR MISSION HOUSING WITH CARE

The mission of Accessible Space Inc (ASI) is to provide accessible, affordable, assisted, supportive and independent living opportunities for persons with physical disabilities and brain injuries as well as seniors. This mission is accomplished through the development and cost-effective management of accessible, affordable housing, as well as the provision of assisted/supportive living and rehabilitation services.

ACKNOWLEDGEMENTS FUNDING AND SUPPORT

Accessible Space, Inc. (ASI) gratefully acknowledges the following organizations for their funding and/or support:

National Handicap Housing Institute, Incorporated. The city of Hibbing, Minnesota, The Hibbing Housing and Redevelopment Authority and The United States Department of Housing and Urban Development (HUD).



Committed to the success of equal housing opportunities

ASI



Accessible Space Inc. (ASI):
Sponsor, Developer and
Management Agent

WINSTON COURT HIBBING, MINNESOTA



***Accessible, Affordable Apartments For
Adults With Qualifying Disabilities***

701 East 31st Street
Hibbing, Minnesota 55746



Accessible Space, Inc.

HOUSING WITH CARE

WINSTON COURTS HIBBING, MINNESOTA

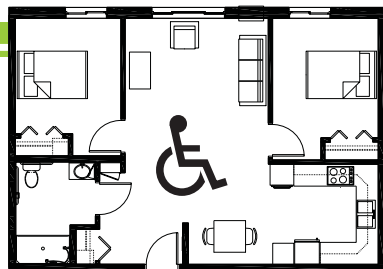
Accessible, Affordable Apartments For Adults With Qualifying Disabilities

AFFORDABLE

- Qualifying households pay 30% of adjusted gross monthly income for rent
- Rent is subsidized by the U.S. Department of Housing and Urban Development (HUD)-Income limits apply
- Rent includes: Heat, water, sewer, trash & snow removal

BASIC QUALIFICATIONS

- One household member must have a qualifying disability
- Applicants are screened for credit, rental and criminal history
- Households must be income qualified (income limits apply and security deposit required)



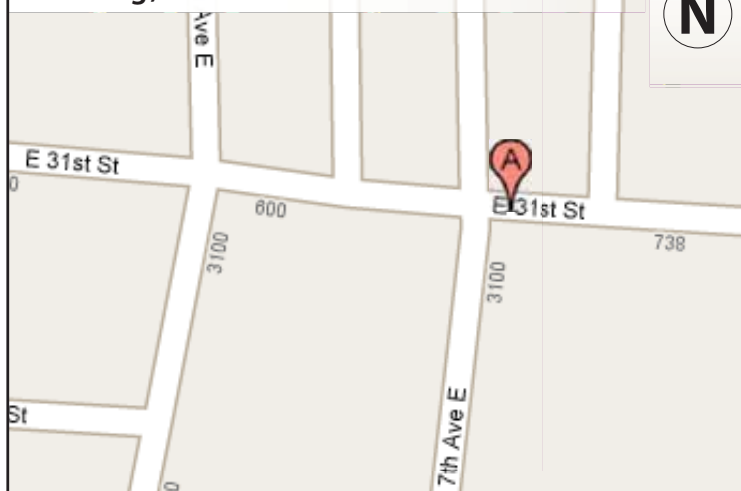
APARTMENT FEATURES

- 17 accessible, one and two bedroom apartments
- Spacious accessible kitchens
- Large accessible bathrooms
- Carpeted bedroom and living room
- Roll-in showers

BUILDING FEATURES

- Accessible main entrance
- Controlled access entry system
- Community room, outdoor terrace & grill
- On-site laundry facilities
- Elevator service
- Lounge area

710 East 31st Street
Hibbing, Minnesota 55746



CONVENIENT NEIGHBORHOOD LOCATION

- Grocery stores, shopping & restaurants
- Banking Services
- Hospitals, medical & professional clinics
- Churches

For more information or to request a housing application, please call

- toll-free 1-800-466-7722
- tty/tdd 1-800-627-3529

Apply online www.accessiblespace.org

Accessible Space, Inc. (ASI)

2550 University Avenue West, Suite 330 North
Saint Paul, Minnesota 55114

