



# Accessible Space, Inc.

2550 University Avenue West, Suite 330 N | St. Paul, Minnesota 55114

## OUR MISSION HOUSING WITH CARE

The mission of Accessible Space, Inc. (ASI) is to provide accessible, affordable, assisted, supportive and independent living opportunities for persons with physical disabilities and brain injuries as well as seniors. This mission is accomplished through the development and cost-effective management of accessible, affordable housing, assisted/supportive/independent living and rehabilitation services.

## ACKNOWLEDGEMENTS FUNDING AND SUPPORT

Accessible Space, Inc. (ASI) gratefully acknowledges the following organizations for their funding and/or support:

The U.S. Department of Housing and Urban Development (HUD); The Minnesota Housing Finance Agency (MHFA); and The Hennepin County HOME Program.

Sponsored by the National Handicapped Housing Institute (NHHI).



Committed to the success of equal housing opportunities throughout the nation

ASI



Accessible Space, Inc. (ASI):  
Developer and  
Management Agent

## MEADOW TRAILS APARTMENTS ROGERS, MINNESOTA

***Accessible, Affordable Apartments For  
Adults With Qualifying Disabilities***

21875 129th Avenue North  
Rogers, Minnesota 55374



**Accessible Space, Inc.**

HOUSING WITH CARE



## MEADOW TRAIL APARTMENTS ROGERS, MINNESOTA

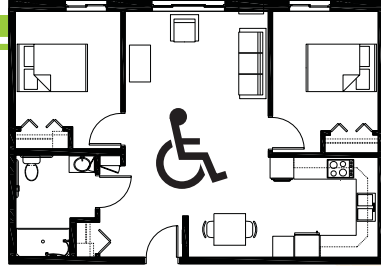
*Accessible, Affordable Apartments For Adults With Qualifying Disabilities*

### AFFORDABLE

- Qualifying households pay 30% of adjusted gross monthly income for rent
- Rent is subsidized by the U.S. Department of Housing and Urban Development (HUD)-Income limits apply
- Rent includes: Heat, water, sewer, trash & snow removal

### BASIC QUALIFICATIONS

- One household member must have a qualifying disability
- Applicants are screened for credit, rental and criminal history
- Households must be income qualified (income limits apply and security deposit required)

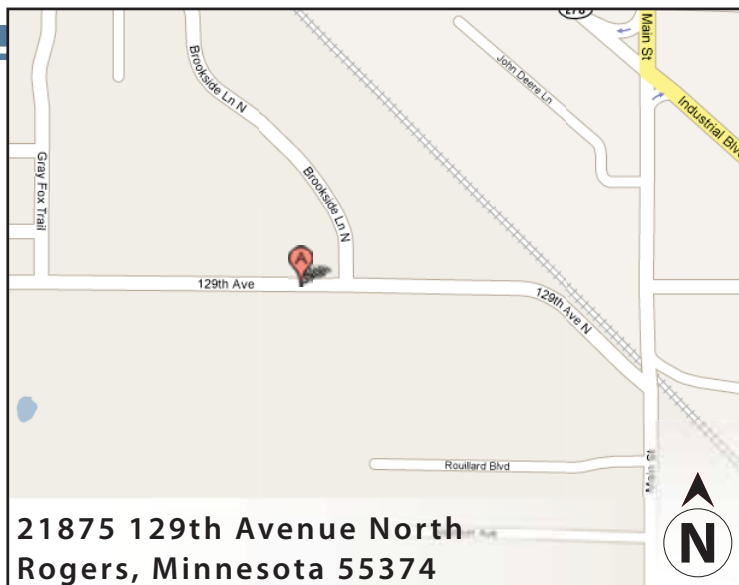


### APARTMENT FEATURES

- 17 accessible, 1 & 2 bedroom apartments
- Spacious accessible kitchens
- Large accessible bathroom
- Carpeted bedroom & living room
- Roll-in showers

### BUILDING FEATURES

- Lever-action door handles
- Controlled access entry system
- Large community room and library
- Outdoor terrace & grill
- Elevator service
- Approved pets welcome!



### CONVENIENT NEIGHBORHOOD LOCATION

- Grocery stores, shopping & restaurants
- Banking Services
- Hospitals, medical & professional clinics
- Churches

For more information or to request a housing application, please call

- toll-free 1-800-466-7722
- tty/tdd 1-800-627-3529

Apply online [www.accessiblespace.org](http://www.accessiblespace.org)

Accessible Space, Inc. (ASI)

2550 University Avenue West, Suite 330 North  
Saint Paul, Minnesota 55114

