



# Accessible Space, Inc.

2550 University Avenue West, Suite 330 N | St. Paul, Minnesota 55114

## OUR MISSION HOUSING WITH CARE

The mission of Accessible Space, Inc. (ASI) is to provide accessible, affordable, assisted, supportive and independent living opportunities for persons with physical disabilities and brain injuries as well as seniors. This mission is accomplished through the development and cost-effective management of accessible, affordable housing, assisted/supportive/independent living and rehabilitation services.

## ACKNOWLEDGEMENTS FUNDING AND SUPPORT

Accessible Space, Inc. (ASI) gratefully acknowledges the following organizations for their funding and/or support:

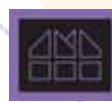
The U.S. Department of Housing and Urban Development (HUD) and The Otto Bremer Foundation.

Sponsored by the National Handicap Housing Institute (NHHI).



Committed to the success of equal housing opportunities throughout the nation

# ASI



Accessible Space, Inc. (ASI):  
Developer and  
Management Agent

## HOPE VILLAGE APARTMENTS SARTELL, MINNESOTA

***Accessible, Affordable Apartments For  
Adults With Qualifying Disabilities***

243 Sundance Road  
Sartell, Minnesota 56377



# Accessible Space, Inc.

HOUSING WITH CARE





# Accessible Space, Inc.

2550 University Avenue West, Suite 330 N | St. Paul, Minnesota 55114

## OUR MISSION HOUSING WITH CARE

The mission of Accessible Space, Inc. (ASI) is to provide accessible, affordable, assisted, supportive and independent living opportunities for persons with physical disabilities and brain injuries as well as seniors. This mission is accomplished through the development and cost-effective management of accessible, affordable housing, assisted/supportive/independent living and rehabilitation services.

## ACKNOWLEDGEMENTS FUNDING AND SUPPORT

Accessible Space, Inc. (ASI) gratefully acknowledges the following organizations for their funding and/or support:

The U.S. Department of Housing and Urban Development (HUD) and The Otto Bremer Foundation.

Sponsored by the National Handicap Housing Institute (NHHI).



Committed to the success of equal housing opportunities throughout the nation

# ASI



Accessible Space, Inc. (ASI):  
Developer and  
Management Agent

## HOPE VILLAGE APARTMENTS SARTELL, MINNESOTA

***Accessible, Affordable Apartments For  
Adults With Qualifying Disabilities***

243 Sundance Road  
Sartell, Minnesota 56377



# Accessible Space, Inc.

HOUSING WITH CARE



# Accessible Space, Inc.

## HOPE VILLAGE APARTMENTS SARTELL, MINNESOTA

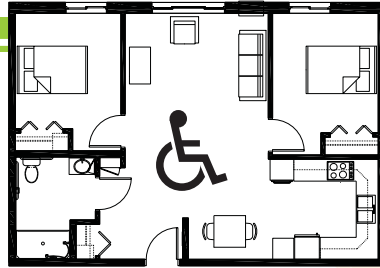
*Accessible, Affordable Apartments For Adults With Qualifying Disabilities*

### AFFORDABLE

- Qualifying households pay 30% of adjusted gross monthly income for rent
- Rent is subsidized by the U.S. Department of Housing and Urban Development (HUD)-Income limits apply
- Rent includes: Heat, water, sewer, trash & snow removal

### BASIC QUALIFICATIONS

- One household member must have a qualifying disability
- Applicants are screened for credit, rental and criminal history
- Households must be income qualified (income limits apply and security deposit required)



### APARTMENT FEATURES

- 15 one & two bedroom apartments
- Spacious, accessible kitchens
- Accessible bathroom with roll-in shower
- Generous closet & storage space
- Carpeted bedroom & living room
- Air-conditioned apartments

### BUILDING FEATURES

- Accessible main entrance
- Controlled access entry system
- Large community room and outdoor patio
- On-site laundry facilities
- Off-street parking
- Approved pets welcome!

243 Sundance Road  
Sartell, Minnesota 56377



### CONVENIENT NEIGHBORHOOD LOCATION

- Grocery stores, shopping & restaurants
- Banking Services
- Hospitals, medical & professional clinics
- Churches

For more information or to request a housing application, please call

- toll-free 1-800-466-7722
- tty/tdd 1-800-627-3529

Apply online [www.accessiblespace.org](http://www.accessiblespace.org)

Accessible Space, Inc. (ASI)

2550 University Avenue West, Suite 330 North  
Saint Paul, Minnesota 55114

