



Accessible Space, Inc.

2550 University Avenue West, Suite 330 N | St. Paul, Minnesota 55114

OUR MISSION HOUSING WITH CARE

The mission of Accessible Space, Inc. (ASI) is to provide accessible, affordable, assisted, supportive and independent living opportunities for persons with physical disabilities and brain injuries as well as seniors. This mission is accomplished through the development and cost-effective management of accessible, affordable housing, assisted/supportive/independent living and rehabilitation services.

ACKNOWLEDGEMENTS FUNDING AND SUPPORT

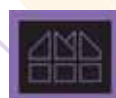
Accessible Space, Inc. (ASI) gratefully acknowledges the following organizations for their funding and/or support:

The U.S. Department of Housing and Urban Development (HUD); The Federal Home Loan Bank of Des' Moines' Affordable Housing Program/U.S. Bank; Wells Fargo Housing Foundation; and the Greater Metropolitan Housing Corporation (GMHC). The National Handicap Housing Institute Inc. (NHHI) was the Co-Sponsor for the River Bluff Apartments.



Committed to the success of equal housing opportunities throughout the nation

ASI



Accessible Space, Inc. (ASI): Co-Sponsor, Developer and Management Agent

RIVER BLUFF APARTMENTS SHAKOPEE, MINNESOTA

Accessible, Affordable Apartments For Adults With Qualifying Disabilities

1020 Bluff Avenue East
Shakopee, Minnesota 55379



Accessible Space, Inc.
HOUSING WITH CARE



AccessibleSpace, Inc.

RIVER BLUFF APARTMENTS SHAKOPEE, MINNESOTA

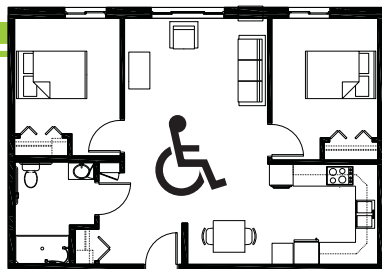
Accessible, Affordable Apartments For Adults With Qualifying Disabilities

AFFORDABLE

- Qualifying households pay 30% of adjusted gross monthly income for rent
- Rent is subsidized by the U.S. Department of Housing and Urban Development (HUD)-Income limits apply
- Rent includes: Heat, water, sewer trash and snow removal

BASIC QUALIFICATIONS

- One household member must have a qualifying disability
- Applicants are screened for credit, rental and criminal history
- Households must be income qualified (income limits apply and security deposit required)

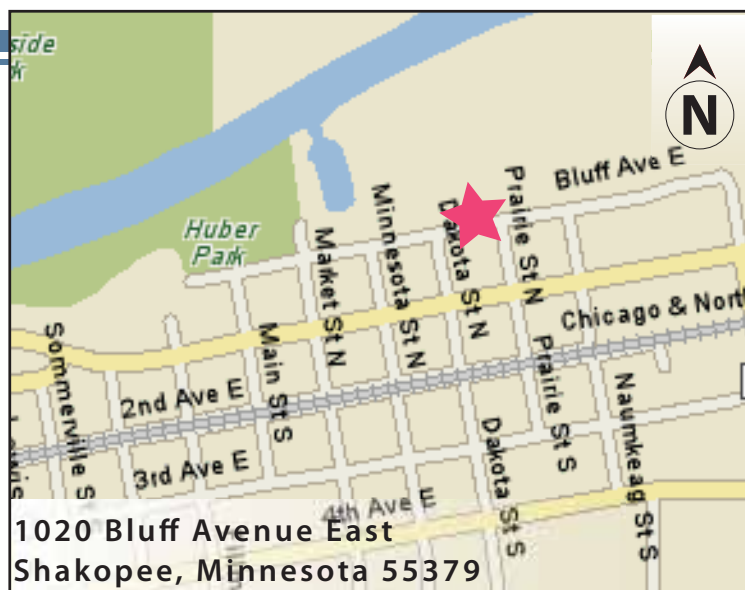


APARTMENT FEATURES

- 21 accessible, 1 & 2 bedroom apartments
- Wheelchair accessible, spacious kitchens
- Large, accessible bathroom
- Carpeted bedrooms and living room
- Raised electrical outlets
- Wheel-in showers

BUILDING FEATURES

- Open entry and lobby
- Controlled access entry system
- Community room & library
- Elevator service
- On-site laundry facilities
- Lever-action door handles
- Lowered light switches



CONVENIENT NEIGHBORHOOD LOCATION

- Grocery stores, shopping & restaurants
- Banking Services
- Hospitals, medical & professional clinics
- Churches

For more information or to request a housing application, please call

- toll-free 1-800-466-7722
- tty/tdd 1-800-627-3529

Apply online www.accessiblespace.org

Accessible Space, Inc. (ASI)

2550 University Avenue West, Suite 330 North
Saint Paul, Minnesota 55114

