



Accessible Space, Inc.

2550 University Avenue West, Suite 330 N | St. Paul, Minnesota 55114

OUR MISSION HOUSING WITH CARE

The mission of Accessible Space, Inc. (ASI) is to provide accessible, affordable, assisted, supportive and independent living opportunities for persons with physical disabilities and brain injuries as well as seniors. This mission is accomplished through the development and cost-effective management of accessible, affordable housing, assisted/supportive/independent living and rehabilitation services.

ACKNOWLEDGEMENTS FUNDING AND SUPPORT

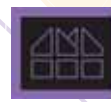
Accessible Space, Inc. (ASI) gratefully acknowledges the following organizations for their funding and/or support:

The Tim O'Brien Memorial Foundation, The Federal Home Loan Bank of Des Moines Affordable Housing Program, and The U.S. Department of Housing and Urban Development (HUD) as well as the friends in tribute of Tim O'Brien, who suffered brain injuries as a result of a 1987 car accident.



Committed to the success of equal housing opportunities throughout the nation

ASI



Accessible Space, Inc. (ASI):
Sponsor, Developer and
Management Agent

TIM O'BRIEN APARTMENTS SPRINGFIELD, MISSOURI

***Accessible, Affordable Apartments For
Adults With Qualifying Disabilities***

2815 South Nettleton Avenue
Springfield, Missouri 65807



Accessible Space, Inc.

HOUSING WITH CARE



Accessible Space, Inc.

TIM O'BRIEN APARTMENTS SPRINGFIELD, MISSOURI

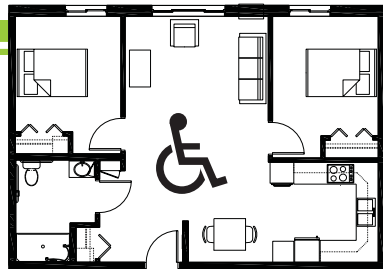
Accessible, Affordable Apartments For Adults With Qualifying Disabilities

AFFORDABLE

- Qualifying households pay 30% of adjusted gross monthly income for rent
- Rent is subsidized by the U.S. Department of Housing and Urban Development (HUD)-Income limits apply
- Rent includes: Water, sewer & snow removal

BASIC QUALIFICATIONS

- One household member must have a qualifying disability
- Applicants are screened for credit, rental and criminal history
- Households must be income qualified (income limits apply and security deposit required)

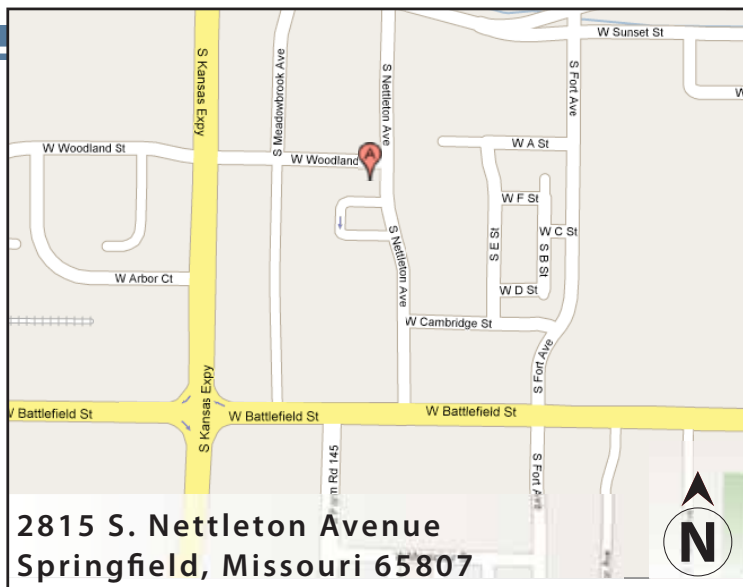


APARTMENT FEATURES

- 19 accessible, one and two bedroom apartments
- Spacious, accessible kitchen
- Large accessible bathroom
- Carpeted bedroom and living room
- Wheel-in showers
- Accessible light switches and outlets
- Lever door handles

BUILDING FEATURES

- Controlled access entry
- Automatic power entry doors
- On site laundry
- Community room
- Patio with gas grill



CONVENIENT NEIGHBORHOOD LOCATION

- Grocery stores, shopping & restaurants
- Banking Services
- Hospitals, medical & professional clinics
- Churches

For more information or to request a housing application, please call

- toll-free 1-800-466-7722
- tty/tdd 1-800-627-3529

Apply online www.accessiblespace.org

Accessible Space, Inc. (ASI)

2550 University Avenue West, Suite 330 North
Saint Paul, Minnesota 55114

