



Accessible Space, Inc.

2550 University Avenue West, Suite 330 N | St. Paul, Minnesota 55114

OUR MISSION HOUSING WITH CARE

The mission of Accessible Space, Inc. (ASI) is to provide accessible, affordable, assisted, supportive and independent living opportunities for persons with physical disabilities and brain injuries as well as seniors. This mission is accomplished through the development and cost-effective management of accessible, affordable housing, assisted/supportive/independent living and rehabilitation services.

ACKNOWLEDGEMENTS FUNDING AND SUPPORT

Accessible Space, Inc. (ASI) gratefully acknowledges the following organizations for their funding and/or support:

The U.S. Department of Housing and Urban Development (HUD); The City of Great Falls HOME Program Funds; and the Federal Home Loan Bank of Des Moines' Affordable Housing Program/U.S. Bank.



Committed to the success of equal housing opportunities throughout the nation

ASI



Accessible Space, Inc. (ASI):
Sponsor, Developer and
Management Agent

MEADOW LARK APARTMENTS GREAT FALLS, MONTANA

***Accessible, Affordable Apartments For
Adults With Qualifying Disabilities***

1701 First Street Northwest
Great Falls, Montana 59404



Accessible Space, Inc.

HOUSING WITH CARE



MEADOW LARK APARTMENTS GREAT FALLS, MONTANA

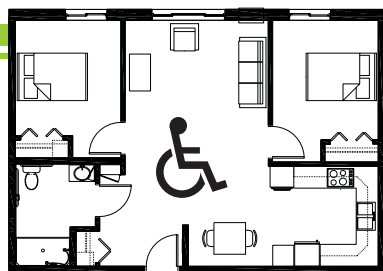
Accessible, Affordable Apartments For Adults With Physical Disabilities

AFFORDABLE

- Qualifying households pay 30% of adjusted gross monthly income for rent
- Rent is subsidized by the U.S. Dept. of Housing and Urban Development (HUD)-Income limits apply
- Rent includes: Heat, water, sewer, trash & snow removal

BASIC QUALIFICATIONS

- One household member must have a qualifying disability
- Applicants are screened for credit, rental and criminal history
- Households must be income qualified (income limits apply a)

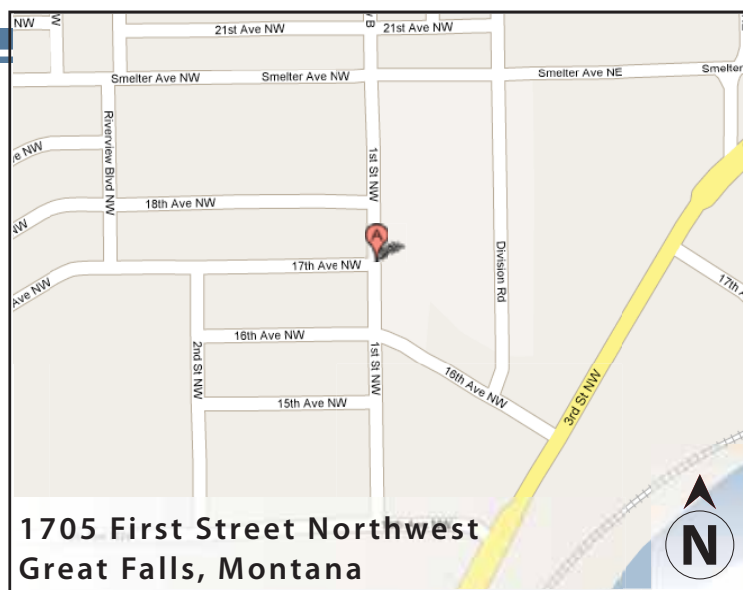


APARTMENT FEATURES

- 17 accessible, one and two bedroom apartments
- Spacious accessible kitchens
- Large accessible bathrooms
- Carpeted bedroom & living room
- Air conditioning & window blinds
- Roll-in showers

BUILDING FEATURES

- Accessible main entrance
- Controlled access entry system
- Large community room & outdoor patio
- Approved pets welcome!
- On-site laundry facilities
- Elevator service



CONVENIENT NEIGHBORHOOD LOCATION

- Grocery stores, shopping & restaurants
- Banking Services
- Hospitals, medical & professional clinics
- Churches

For more information or to request a housing application, please call

- toll-free 1-800-466-7722
- tty/tdd 1-800-627-3529

Apply online www.accessiblespace.org

Accessible Space, Inc. (ASI)

2550 University Avenue West, Suite 330 North
Saint Paul, Minnesota 55114

