



Accessible Space, Inc.

2550 University Avenue West, Suite 330 N | St. Paul, Minnesota 55114

OUR MISSION HOUSING WITH CARE

The mission of Accessible Space, Inc. (ASI) is to provide accessible, affordable, assisted, supportive and independent living opportunities for persons with physical disabilities and brain injuries as well as seniors. This mission is accomplished through the development and cost-effective management of accessible, affordable housing, assisted/supportive/independent living and rehabilitation services.

ACKNOWLEDGEMENTS FUNDING AND SUPPORT

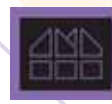
Accessible Space, Inc. (ASI) gratefully acknowledges the following organizations for their funding and/or support:

The U.S. Department of Housing and Urban Development (HUD); Clark County, Nevada HOME Program; The Federal Home Loan Bank of Des Moines' Affordable Housing Program/U.S. Bank.



Committed to the success of equal housing opportunities throughout the nation

ASI



Accessible Space, Inc. (ASI): Sponsor, Developer and Management Agent

SHELBOURNE AVENUE APARTMENTS LAS VEGAS, NEVADA



Accessible, Affordable Apartments For Adults With Qualifying Disabilities

1235 East Shelbourne Avenue, Las Vegas, Nevada 89123



Accessible Space, Inc. HOUSING WITH CARE



SHELBOURNE AVENUE APARTMENTS LAS VEGAS, NEVADA

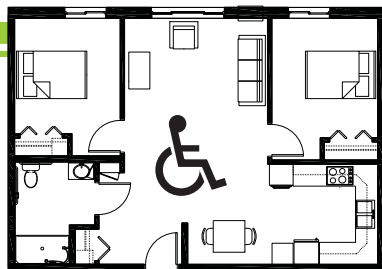
Accessible, Affordable Apartments For Adults With Qualifying Disabilities

AFFORDABLE

- Qualifying households pay 30% of adjusted gross monthly income for rent
- Rent is subsidized by the U.S. Department of Housing and Urban Development (HUD)-Income limits apply
- Rent includes: Heat, water, sewer, trash & snow removal

BASIC QUALIFICATIONS

- One household member must have a qualifying disability
- Applicants are screened for credit, rental and criminal history
- Households must be income qualified (income limits apply and security deposit required)



APARTMENT FEATURES

- 24 Accessible 1 & 2 bedroom apartments
- Accessible, spacious kitchens
- Large, accessible bathrooms
- Carpeted bedrooms and living room
- Generous closet & storage space
- Raised electrical outlets & lowered light switches
- Roll-in shower

BUILDING FEATURES

- Open entry & lobby
- Controlled access entry system
- Elevator service
- Multi-purpose community room
- On-site laundry facilities
- Off-street parking
- Approved pets welcome! (with deposit required ~ restrictions apply)

1235 East Shelbourne Avenue
Las Vegas, Nevada 89123



CONVENIENT NEIGHBORHOOD LOCATION

- Grocery stores, shopping & restaurants
- Banking Services
- Hospitals, medical & professional clinics
- Churches

For more information or to request a housing application, please call

- toll-free 1-800-466-7722
- tty/tdd 1-800-627-3529

Apply online www.accessiblespace.org

Accessible Space, Inc. (ASI)

2550 University Avenue West, Suite 330 North
Saint Paul, Minnesota 55114

