



Accessible Space, Inc.

2550 University Avenue West, Suite 330 N | St. Paul, Minnesota 55114

OUR MISSION HOUSING WITH CARE

The mission of Accessible Space, Inc. (ASI) is to provide accessible, affordable, assisted, supportive and independent living opportunities for persons with physical disabilities and brain injuries as well as seniors. This mission is accomplished through the development and cost-effective management of accessible, affordable housing, assisted/supportive/independent living and rehabilitation services.

ACKNOWLEDGEMENTS FUNDING AND SUPPORT

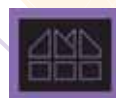
Accessible Space, Inc. (ASI) gratefully acknowledges the following organizations for their funding and/or support:

The U.S. Department of Housing and Urban Development (HUD); The Clark County HOME/LIHTF Program; Federal Home Loan Bank of San Francisco's Affordable Housing Program; Wells Fargo; Norwest/Wells Fargo; and the Nevada Governor's Council on Developmental Disabilities.



Committed to the success of equal housing opportunities throughout the nation

ASI



Accessible Space, Inc. (ASI):
Sponsor, Developer and
Management Agent

RAY RAWSON VILLA LAS VEGAS, NEVADA



***Accessible, Affordable Apartments For
Adults With Qualifying Disabilities***

3420 Lindell Road
Las Vegas, Nevada 89146



Accessible Space, Inc.
HOUSING WITH CARE

AccessibleSpace, Inc.

RAY RAWSON VILLA LAS VEGAS, NEVADA

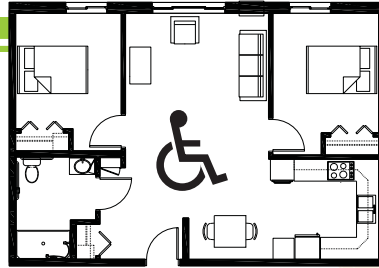
Accessible, Affordable Apartments For Adults With Qualifying Disabilities

AFFORDABLE

- Qualifying households pay 30% of adjusted gross monthly income for rent
- Rent is subsidized by the U.S. Department of Housing and Urban Development (HUD)-Income limits apply
- Rent includes: Heat, water, sewer, trash & snow removal

BASIC QUALIFICATIONS

- One household member must have a qualifying disability
- Applicants are screened for credit, rental and criminal history
- Households must be income qualified (income limits apply and security deposit required)

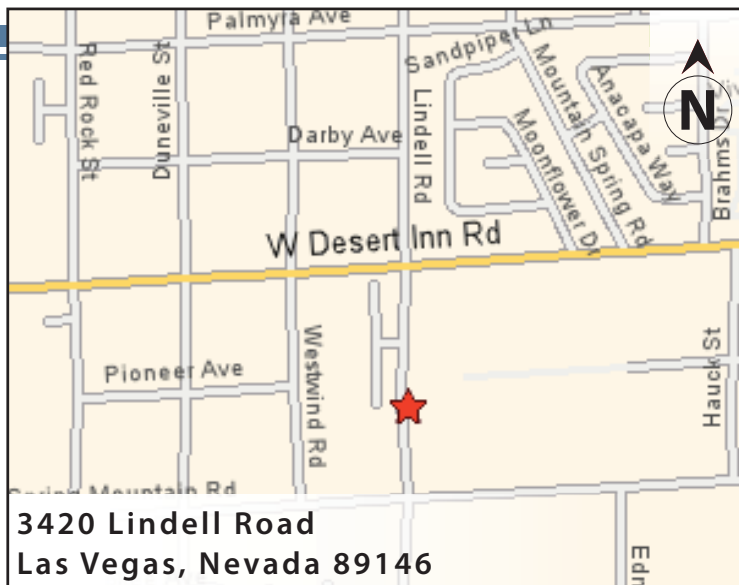


APARTMENT FEATURES

- 24 one and two bedroom apartments
- Wheelchair accessible, spacious kitchens
- Large, accessible bathrooms
- Carpeted bedroom & living room
- Generous closet & storage space
- Roll-in showers
- Air conditioning

BUILDING FEATURES

- Controlled access entry system
- Elevator service
- Large community room & lounge areas
- Outdoor patios
- On-site laundry facilities
- Trash chutes on each floor
- Off-street parking
- Approved pets welcome!



CONVENIENT NEIGHBORHOOD LOCATION

- Grocery stores, shopping & restaurants
- Banking Services
- Hospitals, medical & professional clinics
- Churches

For more information or to request a housing application, please call

- toll-free 1-800-466-7722
- tty/tdd 1-800-627-3529

Apply online www.accessiblespace.org

Accessible Space, Inc. (ASI)

2550 University Avenue West, Suite 330 North
Saint Paul, Minnesota 55114

