



Accessible Space, Inc.

2550 University Avenue West, Suite 330 N | St. Paul, Minnesota 55114

OUR MISSION HOUSING WITH CARE

The mission of Accessible Space, Inc. (ASI) is to provide accessible, affordable, assisted/supportive and independent living opportunities for persons with physical disabilities and brain injuries, as well as seniors. This mission is accomplished through the development and cost-effective management of accessible, affordable housing, as well as the provision of assisted/supportive living and rehabilitation services.

ACKNOWLEDGEMENTS FUNDING AND SUPPORT

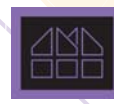
Accessible Space, Inc. (ASI) gratefully acknowledges the following organizations for their funding and/or support:

The U.S. Department of Housing and Urban Development (HUD) and The City of Watertown, South Dakota.



Committed to the success of equal housing opportunities throughout the nation

ASI



Accessible Space, Inc. (ASI):
Sponsor, Developer and
Management Agent

EASTWOOD APARTMENTS WATERTOWN, SOUTH DAKOTA



***Accessible, Affordable Apartments For
Adults With Qualifying Disabilities***

925 25th Street NE
Watertown, South Dakota 57201



Accessible Space, Inc.
HOUSING WITH CARE

Accessible Space, Inc.

EASTWOOD APARTMENTS WATERTOWN, SOUTH DAKOTA

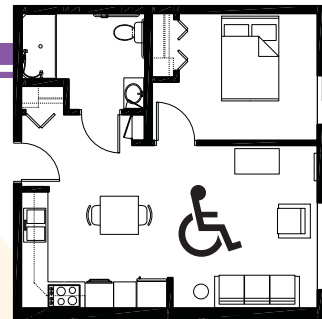
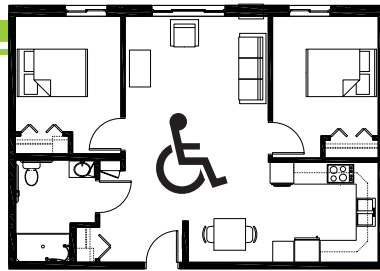
Accessible, Affordable Apartments For Adults With Qualifying Disabilities

AFFORDABLE

- Qualifying households pay 30% of adjusted gross monthly income for rent
- Rent is subsidized by the U.S. Department of Housing and Urban Development (HUD)-Income limits apply
- Rent includes: Heat, water, sewer, trash & snow removal

BASIC QUALIFICATIONS

- One household member must have a qualifying disability
- Applicants are screened for credit, rental and criminal history
- Households must be income qualified (income limits apply and security deposit required)



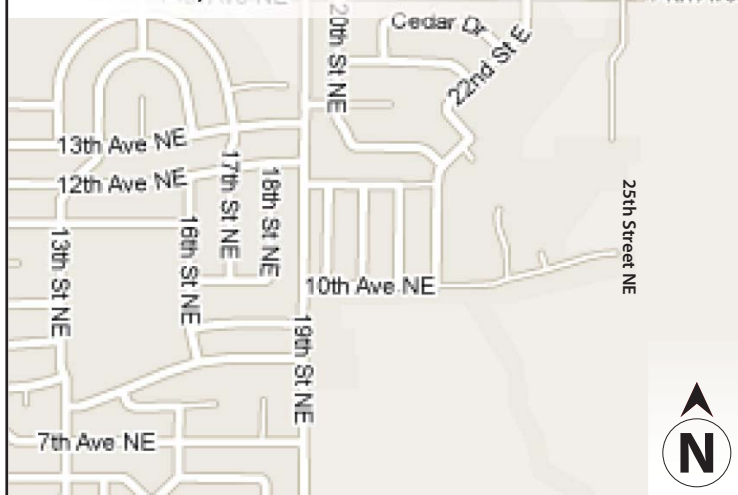
APARTMENT FEATURES

- 18 one & two bedroom apartments
- Spacious, accessible kitchens
- Accessible bathroom with roll-in shower
- Generous closet & storage space
- Carpeted bedroom & living room
- Air-conditioned apartments

BUILDING FEATURES

- Accessible main entrance
- Controlled access entry system
- Large community room and outdoor patio
- On-site laundry facilities
- Off-street parking
- Approved pets welcome!

925 25th Street NE
Watertown, South Dakota 57201



CONVENIENT NEIGHBORHOOD LOCATION

- Grocery stores, shopping & restaurants
- Banking Services
- Hospitals, medical & professional clinics
- Churches

For more information or to request a housing application, please call

- toll-free 1-800-466-7722
- tty/tdd 1-800-627-3529

Apply online www.accessiblespace.org

Accessible Space, Inc. (ASI)

2550 University Avenue West, Suite 330 North
Saint Paul, Minnesota 55114

