



Accessible Space, Inc.

2550 University Avenue West, Suite 330 N | St. Paul, Minnesota 55114

OUR MISSION HOUSING WITH CARE

The mission of Accessible Space, Inc. (ASI) is to provide accessible, affordable, assisted, supportive and independent living opportunities for persons with physical disabilities and brain injuries as well as seniors. This mission is accomplished through the development and cost-effective management of accessible, affordable housing, assisted/supportive/independent living and rehabilitation services.

ACKNOWLEDGEMENTS FUNDING AND SUPPORT

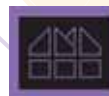
Accessible Space, Inc. (ASI) gratefully acknowledges the following organizations for their funding and/or support:

The U.S. Department of Housing and Urban Development (HUD); The Assissi Foundation, Clty of Memphis Division of Housing and Community Development./HOME Funds; Federal Home Loan Bank of Cincinnati's Affordable Housing Program/Enterprise National Bank; The Tennessee Department of Health; and the Tennessee Housing Development Agency. The Brain Injury Association of the Mid-South, Inc. was the Co-Sponsor for McCullough Place.



Committed to the success of equal housing opportunities throughout the nation

ASI



Accessible Space, Inc. (ASI):
Co-Sponsor, Developer and
Management Agent

McCULLOUGH PLACE MEMPHIS, TENNESSEE

***Accessible, Affordable Apartments For
Adults With Qualifying Disabilities***

1456 Gillham Drive
Memphis, Tennessee 38134



Accessible Space, Inc.
HOUSING WITH CARE



AccessibleSpace, Inc.

McCULLOUGH PLACE MEMPHIS, TENNESSEE

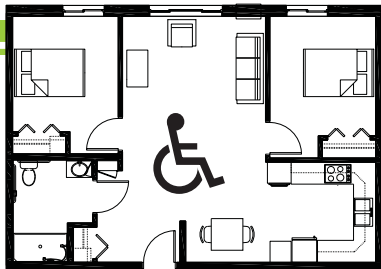
Accessible, Affordable Apartments For Adults With Qualifying Disabilities

AFFORDABLE

- Qualifying households pay 30% of adjusted gross monthly income for rent
- Rent is subsidized by the U.S. Department of Housing and Urban Development (HUD)-Income limits apply
- Rent includes: Electricity, heat, water, sewer and trash service

BASIC QUALIFICATIONS

- One household member must have a qualifying disability
- Applicants are screened for credit, rental and criminal history
- Households must be income qualified (income limits apply and security deposit required)

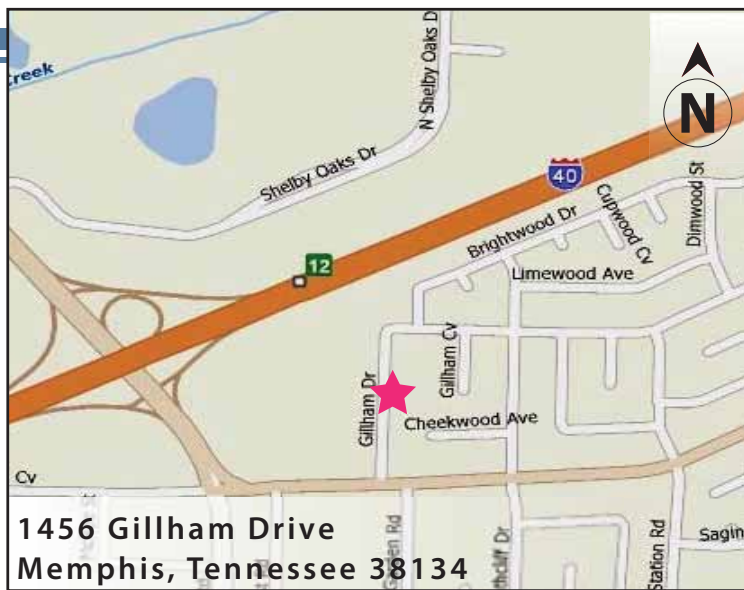


APARTMENT FEATURES

- 25 accessible, 1 & 2 bedroom apartments
- Wheelchair accessible, spacious kitchen
- Large accessible bathroom
- Air-conditioned apartments
- Generous closet and storage space
- Carpeted bedrooms and living room
- Wheel-in shower

BUILDING FEATURES

- Open entry & lobby
- Controlled access entry system
- Elevator service
- Community room & library
- Lever-action door handles
- Raised electrical outlets & lowered light switches.



CONVENIENT NEIGHBORHOOD LOCATION

- Grocery stores, shopping & restaurants
- Banking Services
- Hospitals, medical & professional clinics
- Churches

For more information or to request a housing application, please call

- toll-free 1-800-466-7722
- tty/tdd 1-800-627-3529

Apply online www.accessiblespace.org

Accessible Space, Inc. (ASI)

2550 University Avenue West, Suite 330 North
Saint Paul, Minnesota 55114

