



# Accessible Space, Inc.

2550 University Avenue West, Suite 330 N | St. Paul, Minnesota 55114

## OUR MISSION HOUSING WITH CARE

The mission of Accessible Space, Inc. (ASI) is to provide accessible, affordable, assisted, supportive and independent living opportunities for persons with physical disabilities and brain injuries as well as seniors. This mission is accomplished through the development and cost-effective management of accessible, affordable housing, assisted/supportive/independent living and rehabilitation services.

## ACKNOWLEDGEMENTS FUNDING AND SUPPORT

Accessible Space, Inc. (ASI) gratefully acknowledges the following organizations for their funding and/or support:

The U.S. Department of Housing and Urban Development (HUD); The Federal Home Loan Bank of Dallas- Affordable Housing Program; Houston Endowment; The Swalm Foundation; Cameron Foundation; The Bay Area Rehabilitation Center, Inc. was the Co-Sponsor for Rollingbrook Commons.



Committed to the success of equal housing opportunities throughout the nation

ASI



Accessible Space, Inc. (ASI): Co-Sponsor, Developer and Management Agent

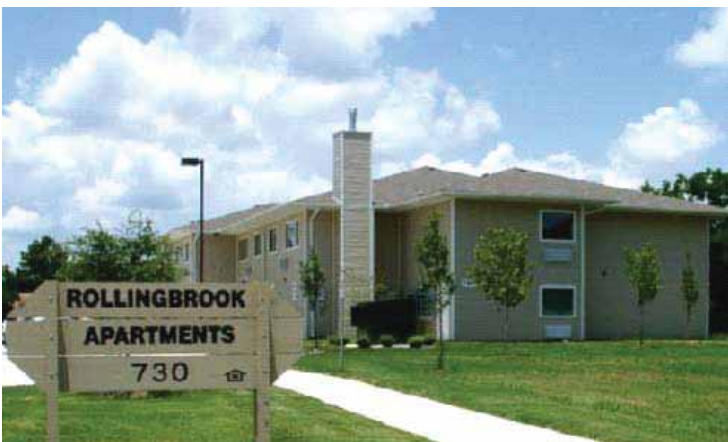
## ROLLINGBROOK APARTMENTS BAYTOWN, TEXAS

***Accessible, Affordable Apartments For Adults With Qualifying Disabilities***

730 Rollingbrook Drive  
Baytown, Texas 77521



**Accessible Space, Inc.**  
HOUSING WITH CARE



## ROLLINGBROOK APARTMENTS BAYTOWN, TEXAS

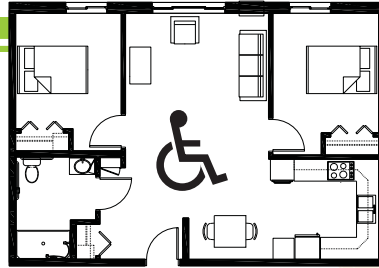
*Accessible, Affordable Apartments For Adults With Qualifying Disabilities*

### AFFORDABLE

- Qualifying households pay 30% of adjusted gross monthly income for rent
- Rent is subsidized by the U.S. Department of Housing and Urban Development (HUD)-Income limits apply
- Rent includes: Heat, water, sewer and trash service

### BASIC QUALIFICATIONS

- One household member must have a qualifying disability
- Applicants are screened for credit, rental and criminal history
- Households must be income qualified (income limits apply and security deposit required)



### APARTMENT FEATURES

- 25 one and two bedroom apartments
- Large, accessible bathroom
- Generous closet and storage space
- Carpeted bedrooms and living room
- Large, accessible bathrooms
- Wheel-in shower
- Lever-action door handles

### BUILDING FEATURES

- Large, open entry & lobby
- Controlled access, hands free entry system
- Community room & library
- On-site laundry facilities
- Elevator service
- Raised electrical outlets and lowered lightswitches



### CONVENIENT NEIGHBORHOOD LOCATION

- Grocery stores, shopping & restaurants
- Banking Services
- Hospitals, medical & professional clinics
- Churches

**For more information or to request a housing application, please call**

- toll-free 1-800-466-7722
- tty/tdd 1-800-627-3529

**Apply online** [www.accessiblespace.org](http://www.accessiblespace.org)

**Accessible Space, Inc. (ASI)**

2550 University Avenue West, Suite 330 North  
Saint Paul, Minnesota 55114

