



# Accessible Space, Inc.

2550 University Avenue West, Suite 330 N | St. Paul, Minnesota 55114

## OUR MISSION HOUSING WITH CARE

The mission of Accessible Space, Inc. (ASI) is to provide accessible, affordable, assisted, supportive and independent living opportunities for persons with physical disabilities and brain injuries as well as seniors. This mission is accomplished through the development and cost-effective management of accessible, affordable housing, assisted/supportive/independent living and rehabilitation services.

## ACKNOWLEDGEMENTS FUNDING AND SUPPORT

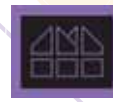
Accessible Space, Inc. (ASI) gratefully acknowledges the following organizations for their funding and/or support:

The U.S. Department of Housing and Urban Development (HUD); and The Federal Home Loan Bank of Des Moines' Affordable Housing Program/U.S. Bank.



Committed to the success of equal housing opportunities throughout the nation

ASI



Accessible Space, Inc. (ASI):  
Sponsor, Developer and  
Management Agent

## ASPEN VILLAGE APARTMENTS HELENA, MONTANA

***Accessible, Affordable Independent Living  
Apartments for Seniors age 62 & Better***

615 Janet Street  
Helena, Montana 59601



**Accessible Space, Inc.**

HOUSING WITH CARE



# Accessible Space, Inc.

## ASPEN VILLAGE APARTMENTS HELENA, MONTANA

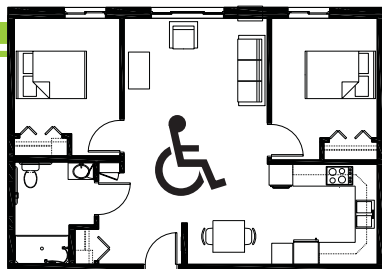
*Accessible, Affordable Independent Living Apartments for Seniors 62 & Better*

### AFFORDABLE

- Qualifying households pay 30% of adjusted gross monthly income for rent
- Rent is subsidized by the U.S. Dept. of Housing and Urban Development (HUD)-Income limits apply
- Rent includes: Heat, water/sewer, trash/snow removal

### BASIC QUALIFICATIONS

- One household member must be at least 62 years of age
- Applicants are screened for credit, rental and criminal history
- Households must be income qualified (income limits apply and security deposit required)

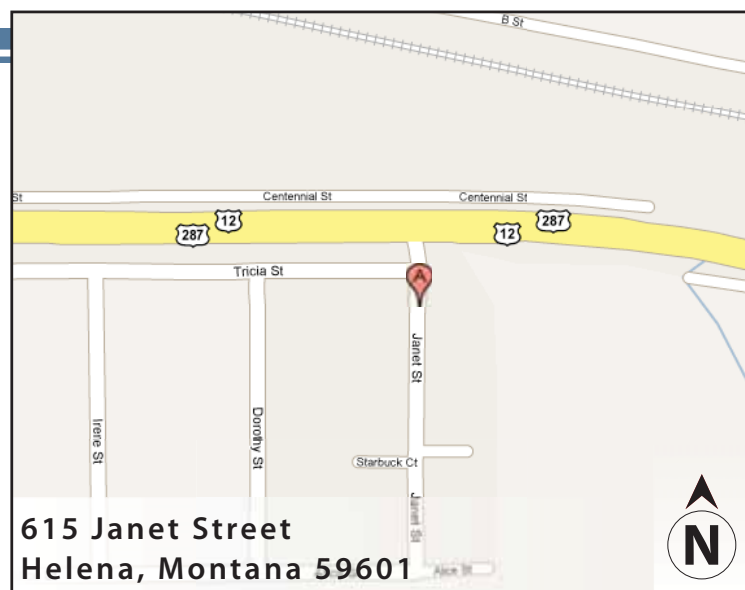


### APARTMENT FEATURES

- 40 one bedroom apartments
- Wheelchair accessible apartments available
- Spacious kitchens and large bathrooms
- Carpeted bedroom and living room
- Air conditioning
- Mini-blinds on windows

### BUILDING FEATURES

- Large, open entry & lobby
- Controlled access entry system
- Activity room, therapy tub room
- Laundry facilities on each floor
- Trash chutes on upper floors
- Outdoor courtyard
- Community room with kitchen facilities
- Approved pets welcome!
- Elevator service



### CONVENIENT NEIGHBORHOOD LOCATION

- Grocery stores, shopping & restaurants
- Banking Services
- Hospitals, medical & professional clinics
- Churches

**For more information or to request a housing application, please call**

- toll-free 1-800-466-7722
- tty/tdd 1-800-627-3529

**Apply online** [www.accessiblespace.org](http://www.accessiblespace.org)

**Accessible Space, Inc. (ASI)**

2550 University Avenue West, Suite 330 North  
Saint Paul, Minnesota 55114

