

NEWS TO FRIENDS OF Accessible Space, Inc.



Fall 2016

Volume 33

Number 2

In This Issue

- Voyageur Apartments Opens
- ASI New Developments
- Capital Improvements to ASI Buildings
- ASI Assumes Management of Coronado Drive Apartments
- We Raised Some Fun at A Taste for Space!
- Wisconsin Fair Housing Network
- Josh Berg, Acting Director of Program Services
- Save The Date
- Opportunities to Support ASI
- Mission Support Luncheon
- Dina Titus Estates Celebrates Its Anniversary
- In Memoriam: Matthew Wilson
- In Memoriam: Mary Martin
- In Memoriam
- Special Thanks for the Support of ASI
- Combined Federal Campaign
- Annual Appeal

PLEASE sign-up for our e-mail newsletter by going to www.accessiblespace.org and clicking on "join our e-mail list" at the top of the screen.

The mission of **ACCESSIBLE SPACE, INC. (ASI)** is to provide accessible, affordable, assisted/supportive and independent living opportunities for persons with physical disabilities and/or brain injuries, as well as seniors.

"Housing with Care"®

ASI Administrative Offices are located at
2550 University Avenue West, Suite 330N, St. Paul, Minnesota 55114
(651) 645-7271 • FAX (651) 645-0541 • 1-800-466-7722
TDD/Voice 1-800-627-3529 • www.accessiblespace.org



Voyageur Apartments in Great Falls, Montana was completed on June 21, 2016.

VOYAGEUR APARTMENTS OPENS

Voyageur Apartments in Great Falls, Montana was completed on June 21, 2016. Voyageur Apartments is an independent living, housing community for seniors 55 and older including those with physical disabilities. Of the total 38 units, eight (8) resident units are 100% wheelchair accessible.

ASI would like to thank the **City of Great Falls** for their commitment of HOME Program funds; the **Federal Home Loan Bank of Chicago's Affordable Housing Program** with assistance from **Bremer Bank** and **Banker's Bank**; and the **Montana Division of Housing**. A special thank you is also extended to our LIHTC consultants, Eileen Piekarcz of Rural Community

Assistance Corporation (RCAC); and Eric Novak and Dr. Hilary Lopez of Praxis Consulting Group, LLC.

Voyageur Apartments is located at 1630 Division Road in Great Falls, Montana. Voyageur Apartments is less than 60 yards north of Great Falls Medical Clinic Northwest and is adjacent to ASI's Meadowlark Apartments on the west. ASI has a total of 11 accessible, affordable ASI buildings in Montana. Seven of the Montana buildings are designed for very low-income adults with physical disabilities and/or traumatic brain injuries. These buildings are located in Billings, Bozeman, Great Falls (2), Helena and Missoula (2). Five of ASI's Montana buildings are designed for low-income and very low-income seniors. These buildings are located in Bozeman, Great Falls (2), Helena and Kalispell.

Voyageur Apartments began construction in May 2015. A dedication and open house is being planned for spring 2017.

Anyone interested in receiving application information for Voyageur Apartments should contact Laurie Mitchell at Tamarack Property Management (406) 272-1843.



Voyageur Apartments residents enjoy their first Holiday Party.

Commons area of Voyaguer Apartments, Great Falls, Montana



To apply for housing online, click on the housing link at the top of this page: <http://www.accessiblespace.org/>

*Patio**Kitchen**Upper Lounge*

Voyager Apartments, Great Falls, Montana



To apply for housing online, click on the housing link at the top of this page: <http://www.accessiblespace.org/>

ASI NEW DEVELOPMENTS

Since the spring 2016 issue of **News to Friends of Accessible Space, Inc.**, one accessible, affordable building was completed in Great Falls, Montana and another ASI development continued construction in Las Vegas, Nevada.

Voyageur Apartments completed construction on June 21, 2016. Voyageur Apartments received LIHTC funds from the Montana Division of Housing. Voyageur Apartments will be an independent living senior housing community for adults 55 and older. Of the total 38 units, eight (8) resident units were designed to be 100% wheelchair accessible.

For more information on Voyageur Apartments please see the story on Page one.



On May 25, 2016 construction began on Patriot Place Apartments in Las Vegas, Nevada.

On May 25, 2016 construction began on **Patriot Place Apartments** (ASI Veterans Supportive Housing Development) in **Las Vegas, Nevada**. In July 2015 Patriot Place Apartments was awarded Low-Income Housing Tax Credits (LIHTC) from the Nevada Housing Division. Patriot Place Apartments will be a 50 unit accessible, affordable rental development for veterans, homeless veterans and veterans with physical disabilities. Of the total 50 units, 25 (50%) resident units have been designed to be fully wheelchair accessible.

Patriot Place Apartments will give preference for all of the units to qualifying veterans households. In addition 20% of the units are designated for homeless veterans.

Accessible Space, Inc. (ASI) would like to thank **Clark County Community Resources Management**

for their commitment of HOME Program funds; the **Federal Home Loan Bank of San Francisco's Affordable Housing Program** with assistance from **Wells Fargo**; a **Wells Fargo Housing Foundation's Priority Markets Grant**; as well as the **Nevada Housing Division**. A special thank you is also extended to our LIHTC consultants, Eric Novak and Dr. Hilary Lopez of Praxis Consulting Group, LLC.

Patriot Place Apartments will be located at 4245 S. Pecos Road, Las Vegas, Nevada (just south of Flamingo Road). The site is near social services, shopping, pharmacies, restaurants, banks, churches and a library.

In October 2015 the Southern Nevada Regional Housing Authority (SNRHA) Board of Commissioners unanimously approved 13 VASH (Veteran's Administration Supportive Housing) Vouchers and 36 Section 8 Project-Based Housing Choice Vouchers. The award of these vouchers will greatly assist the residents by providing rental assistance for tenants.

Patriot Place Apartments joins 17 other accessible, affordable ASI buildings in the Las Vegas Metropolitan Area in addition to The Loux Center which is home of the Nevada Community Enrichment Program (NCEP).

Patriot Place Apartments is scheduled for completion in late July 2017.

Anyone interested in receiving information on ASI's newest developments should contact ASI's Property Management Department at (800) 466-7722. Your call will be directed to the appropriate Property Manager.





Residents of Winston Courts Apartments in Hibbing, Minnesota

CAPITAL IMPROVEMENTS TO ASI BUILDINGS

Accessible Space, Inc. (ASI) staff has been busy with rehabilitation and energy upgrade projects over the past six months. Improvements to the following ASI properties will help prolong the life of these HUD subsidized, accessible apartment buildings.

This spring **Quarry Heights Apartments in St. Cloud, Minnesota** continued renovations to maintain this 22 year old, 24 unit accessible, affordable building. In spring 2015 the front of the building was re-sided. The remaining capital improvements included siding replacement, a new roof, painting of fascia and soffits, parking lot resurfacing, a replacement card reader for the main entrance and an automatic door opener for the laundry room. These additional improvements were completed in late summer 2016. The recent improvements were funded primarily through a donation by the **Otto Bremer Trust** and the **Wiggins Foundation**.

Work has continued on **Pesch Place in Golden Valley, Minnesota**. Rehabilitation funds were provided through the **City of Golden Valley/Hennepin County CDBG Consolidated Pool**. Pesch Place consists of five units of accessible, affordable housing for adults with physical disabilities. The building is within an easy roll/walk of Courage Kenny Rehabilitation Institute (formerly Courage Center). Originally constructed by Courage Center, Pesch Place was acquired in 1993. Work to be completed includes bathroom renovations, replacement of floor coverings in common areas, replacement of

retaining wall and replacement of accessible path to lower level.

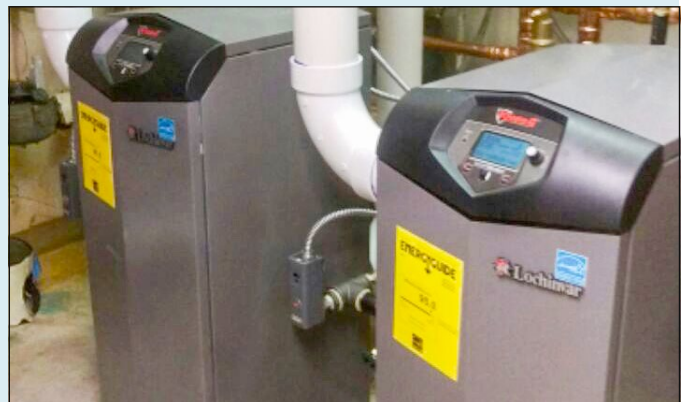
Pesch Place is named for Michael Pesch. In 1975, Michael Pesch broke his neck in a drought-shallow lake in northern Minnesota and, as a result, was paralyzed for the rest of his life. Following a time at Courage Center, Michael was ready to move on, but his options were too limited, so with the support of his friends, Steve Wiggins, Charles Berg and Stephen Vander Schaaf, Michael became a force behind accessible, affordable housing for people with mobility impairments.

Winston Courts Apartments in Hibbing, Minnesota and **Redruth Valley Apartments in Duluth, Minnesota** were recently refinanced which included funding for renovations to both buildings.

In spring 2016 Winston Courts Apartments received approval from St. Louis County to proceed with further renovations to this 18 unit accessible, affordable building which opened in June 1989. Renovations will be completed using funds from a **Community Development Block Grant (CDBG)** from **St. Louis County Community Development**, funds from the HUD reserve for replacement account for the building, as well as refinancing funds. The building also received funds from St. Louis County in 2012 to improve the common areas of the building.

Current renovations to 15 of the apartments in Winston Courts include new carpeting, vinyl flooring and appliances in the resident units. Repairs to the building structure include modernization of the elevator, siding replacement and replacement of the boiler.

The renovations at Redruth Valley Apartments include replacing the boilers for the building's heating system; pressure wash and repair of the deck; and repair, seal coat and restripe the parking lot.



New boilers for Redruth Valley Apartments



ASI ASSUMES MANAGEMENT OF CORONADO DRIVE APARTMENTS

By Ken Berry, ASI's Director of Property Management

On Friday, September 30, 2016 Accessible Space, Inc. (ASI) assumed the role as Management Agent of **Coronado Drive Apartments**. ASI staff were handed the keys to this flagship accessible, affordable, 60 unit senior housing community in **Henderson, Nevada**. ASI staff were quite busy working with our new residents, as well as incorporating ASI's centralized management structure with our on-site and regional staff, all of whom were at the property the previous week making sure the transition went as smooth as possible.

Since Coronado Drive Apartments opened its doors on July 27, 2011 it has been ASI's goal to make this transition to management of the building. ASI served as sponsor and developer of Coronado Drive Apartments from inception of the project in 2007.

Since July 2011, ASI staff has been preparing and assembling an experienced, effective crew in Nevada, as well as at ASI's Saint Paul administrative office, to assume the responsibilities that come with owning and managing Low Income Housing Tax Credit (LIHTC) funded housing.

ASI staff are eager to have this opportunity to expand ASI's managed housing portfolio with this transition, the completion of which will set ASI on a course for the future management of other LIHTC funded housing sites across the nation. These include existing LIHTCs in Colorado, Montana, as well as in Nevada – starting with ASI's Patriot Place Apartments currently under construction in Las Vegas. ASI staff looks forward to the continued steady growth of ASI's managed portfolio, and I thank everyone who has supported and assisted in our efforts to reach this milestone. It truly takes a village to do what we do and meet mission with nearly 3,004 residents at more than 136 housing sites in 25 states across the nation, and more to come!



Above and below: Interior photos of Coronado Drive Apartments



WE RAISED SOME FUN AT A TASTE FOR SPACE

Great beer, Cajun food and fabulous prizes! We had it all at our 5th annual A Taste for Space at Boom Island Brewing Company in Minneapolis on June 8, 2016.

A big thank you to **Boom Island Brewing Company** for opening their doors and promoting our event. Boom Island crafts Belgian beer, several varieties of which were available by the glass or in flights.

Louisiana Purchase was on hand with their Ragin' Cajun cuisine for our hungry guests. A raffle for prizes added to the fun. **Thank you to these**

generous raffle donors: US Bank, Saint Paul Saints, Guthrie Theater, Kyatchi Restaurant, Canterbury Park, Chanhassen Dinner Theater, Radisson Blu MOA, Mall of America, Park Tavern, Riddle Room, Jungle Theater, Punch Pizza, Surdyks and the Bement Family.

ASI's Fund Development Advisory Committee, a group of community volunteers, hosted this great event to raise awareness of our mission to provide accessible, affordable, "housing with care" for people with disabilities and for seniors. Thank you to these volunteers.

If you are interested in joining this group of dedicated volunteers for their next event to benefit Accessible Space, Inc., please contact Jacque Rooney, ASI's Fund Development Associate, at 1-800-466-7722 or 651-645-7271, ext. 252; or via email at jrooney@accessiblespace.org to learn how you can help.



Images of A Taste for Space

To apply for housing online, click on the housing link at the top of this page: <http://www.accessiblespace.org/>

WISCONSIN FAIR HOUSING NETWORK



Annual Fair Housing Awards were presented on July 13, 2016 during the statewide **A Home For Everyone Conference of The Wisconsin Collaborative for Affordable Housing and the Wisconsin Fair Housing Network** held in Appleton, Wisconsin.

Two fair housing awards were presented from nominations submitted in response to a statewide solicitation to over 400 organizations.

A "Fair Housing Organization Award" was presented to Accessible Space, Inc. (ASI) recognizing the positive housing and services provided by ASI for its two developments in **Hudson, Wisconsin, St. Croix County**, known as **Tribute Commons** and **Heirloom Court**. The former provides 15 accessible, affordable one and two bedroom apartments for people with physical disabilities. The latter consists of 32 accessible, affordable apartments for older persons. More generally, the award recognizes the work Accessible Space performs through its advertising and outreach in recruitment of persons of color, as well as non-minorities to its housing complexes through its national program.

Accepting the award for Accessible Space was Ken Berry, Director of Property Management and Section 504 Coordinator.



*Tribute Commons
Hudson, Wisconsin*

*Heirloom Court
Hudson, Wisconsin*



JOSH BERG, ACTING DIRECTOR OF PROGRAM SERVICES



In January 2016, **Josh Berg** accepted the Administrator position (Assisted Living, Adult Foster Care, and Independent Living Skills services) at Accessible Space, Inc. (ASI). Josh is currently serving as **Acting Director of Program Services**. Prior to joining ASI, Josh led the Home Care and Assisted Living Program at the Minnesota Department of Health. Josh has worked in a variety of positions in senior and disability services, including as an Area Director and as a Senior Behavior Therapist.

Josh has his BA in Psychology from Creighton University located in Omaha, Nebraska.

Josh and his wife, Michelle, have two children, Noah (six) and Stella (five).

SAVE THE DATE

7th Annual Mission Support Luncheon

Thursday, October 5, 2017

from Noon to 1:00 p.m.

Town and Country Club

300 Mississippi River Blvd. N.,
St. Paul, Minnesota 55104

OPPORTUNITIES TO SUPPORT ASI

EMPLOYER MATCHING GIFTS

Many employers sponsor matching gift programs and will match any charitable contributions made by their employees.

If your company is eligible, request a matching gift form from your employer, and send it completed and signed with your gift. Accessible Space, Inc. will do the rest.

The impact of your gift to our mission may be doubled or possibly tripled! Some companies match gifts made by retirees and/or spouses, as well.

HONOR A LOVED ONE OR SPECIAL FRIEND

Pay tribute or honor a special person's birthday, anniversary, or other special occasion, with a Memorial or Honorarium gift to Accessible Space, Inc.

Your name, as the donor, and the person being honored, will be acknowledged in ASI publications.

SPONSOR, HOST, OR ATTEND

A Taste For Space beer tasting event
June 2017

"Let's Open Some Doors" Luncheon
Thursday, October 5, 2017

To learn how you can get involved,
contact **Jacque Rooney**, ASI's Fund
Development Associate, at

1-800-466-7722 or 651-645-7271, ext. 252
email to jrooney@accessiblespace.org

MISSION SUPPORT LUNCHEON

“It lets me be myself.” This is how Tracey White describes living at ASI’s Quarry Heights Apartments in her accessible, affordable apartment in St. Cloud, Minnesota as she tells her inspiring story in this year’s **Let’s Open Some Doors** mission support luncheon video.

On September 28, 2016 Accessible Space, Inc. (ASI) held its sixth annual mission support luncheon at Town & Country Club in Saint Paul, Minnesota. During lunch, guests heard mission testimonials and poignant stories from ASI’s team including: Mark Hamel, Chair of ASI’s Board of Directors, Stephen Vander Schaaf, ASI’s President/CEO; Steve Wiggins, ASI Founder and Board Member, Managing Director of Essex Woodlands Health Ventures and Chairman of Remedy Partners, Inc.; Jennifer Samaha, ASI’s former Director of Program Services and current Board Member; and Scott Barsuhn, Barsuhn Design and Fund Development Advisory Committee member. Thabiso Rowan, ASI’s Intake Specialist performed “Let Me Be Myself.”

Jennifer Samaha introduced ASI’s new mission video which premiered at the luncheon. “Let Me Be Myself” features five ASI residents with their stories of determination. Readers are encouraged to view this inspiring video at www.accessiblespace.org/giving.

ASI would like to thank the members of the Fund Development Advisory Committee and the volunteer table hosts who invited their family, friends and work associates to our event. **A big “Thank You” to the sponsors of the event: the Maguire Agency, Matt Clysdale; SFM Mutual Insurance Company, Bob Lund; and U.S. Bank, Bryan Ljung.** Over \$114,000 was raised through the kind contributions of the luncheon’s 189 guests to support the mission of ASI.



[Click here to see the video, “Let’s Open Some Doors.”](#)



Left: Thabiso Rowan, ASI’s Intake Specialist



Right: Jennifer Samaha, ASI’s former Director of Program Services and current Board Member



Maguire Agency and SFM Staff: June Aune, Becky McDonald, Martha Crump, Patty Paulson and Matt Clysdale



Steve Sonnek with his family: (left) Harry Sonnek, Renee Sonnek and (right) Michael Sonnek



Deb Vander Schaaf, Jennifer Samaha, Nancy Schugel, Steve Vander Schaaf and Steve Schugel



*Left: Steve Wiggins, ASI's Founder and Board Member
Right: Steve Vander Schaaf, ASI's President/CEO*



Hinrichs & Associates Staff: Dan Peterson, Ray Borchardt, Nate Meinz and Brian Baker



Hinrichs & Associates Staff: Lori Schuenke, Faith Terry and Bob Baker



Mahoney, Ulbrich, Christiansen, Russ, CPA Staff: Katie Mackendanz, Lexie Alfsen and Tyler Anderson



Dr. Larry Schut, Loretta Schut, Pamela Jenkins and Mark Hamel

DINA TITUS ESTATES CELEBRATES ITS ANNIVERSARY

On July 21, 2016 Accessible Space, Inc. (ASI) held an anniversary celebration of the completion of **Dina Titus Estates** in **Las Vegas, Nevada**. The date was also a 26th anniversary celebration for the signing of the Americans with Disability Act (ADA) on July 26, 1990.



Congresswoman Dina Titus in blue jacket and Dan Billmark standing on the right

Named in honor of **Nevada First District Congresswoman Dina Titus** the 19 unit building is located at 5050 Missouri Avenue in Las Vegas, Nevada. Dina Titus Estates opened on July 7, 2005. Now in her third term in the U.S. House of Representatives, Congresswoman Titus is a member of the House Committee on Transportation and Infrastructure and its Subcommittees of Aviation, Highways and Transit; and Water Resources and Environment. In addition she serves on the House Committee on Veterans' Affairs and is a Ranking Member of the Subcommittee on Disability Assistance and Memorial Affairs (DAMA). She also is a member of the Senior Whip Team for the minority.

Guests included Dina Titus Estates' residents and their families; and Congresswoman Dina Titus and staff from her office. Also attending were Marisa Olmeda-Macias, ASI's Regional Housing Manager; Denise Kunz, ASI's Regional Housing Representative; and Dan Billmark, ASI's Director of Real Estate Development.

IN MEMORIAM: MATTHEW WILSON



Matthew B. Wilson, born on May 2, 1971, passed away on September 14, 2016. Matt was ASI's Site Liason at Heritage Court Apartments in Cheyenne, Wyoming.

Our deepest sympathies are extended to his wife,

Becky and their children and grandchildren. Matt was a loving husband, father, grandpa, son, brother, uncle and friend. His sense of humor and kind heart will be missed by all those who came in touch with him. He loved his family and enjoyed golfing, fishing, coaching tackle football and his Denver Broncos.

A celebration of Matt's life was held on September 19, 2016.



IN MEMORIAM: MARY MARTIN

Mary Martin passed away on October 17, 2016. Mary served as Associate Director at Human Resource Development Council in Bozeman,

Montana (HRDC-Bozeman). Accessible Space, Inc. (ASI) worked with Mary during the development of its two sites in Bozeman: Spring Run Apartments, an 18 unit accessible, affordable apartment building designed for very low-income adults with physical disabilities; and Summer Wood Apartments, a 37 unit accessible, affordable apartment building designed for very low-income seniors. These two buildings opened in November 2006 and May 2007, respectively. ASI staff worked with Mary and HRDC-Bozeman while that organization managed Summer Wood Apartments from its opening until June 2010.

IN MEMORIAM

ASI is saddened by the passing of 38 residents over the past six months. We will miss our friends and the spirit they brought to ASI.

Ricardo Alesandro 12/26/1943-10/5/2016
The Dakota, Capitola, California

Laura Barton 10/5/1971-6/28/2016
Dina Titus Estates, Las Vegas, Nevada

Cecilia Charles 8/10/1972-8/26/2016
George & Lois Brown Estates, Henderson, Nevada

Goldie Collins 10/10/1940-9/1/2016
A.P.'s Freedom Apartments, Exmore, Virginia

Patricia Daignault 6/21/1954-5/31/2016
Summer Wood Apartments, Bozeman, Montana

Robbin Dudley 7/18/1929-7/14/2016
Autumn Trails of Rogers, Rogers, Minnesota

Jay Forss 12/21/1949-5/26/2016
28th Street House, Minneapolis, Minnesota

Faith Foster 9/1/1946-5/8/2016
John Chambers Apartments, Las Vegas, Nevada

Frank Funk 7/24/1941-7/30/2016
Eastwood Apartments, Watertown, South Dakota

Scott Hager 3/21/1961-9/29/2016
The Dakota, Capitola, California

Gretchen Hull 11/12/1958- 9/8/2016
Homeward Bound Apartments, Santa Fe, New Mexico

Phil Jennings 10/31/1957-7/29/2016
Galaxy Apartments, Rapid City, South Dakota

Shirley Johnson 3/26/1972- 10/21/2016
Blackbird Apartments, Kansas City, Kansas

Charles Juhnke 11/23/1954- 5/16/2016
Bostrom Terrace, Rochester, Minnesota

Patricia Kettwig 8/8/1933-10/4/2016
Maple Trail Apartments, Owatonna, Minnesota

Michael Koscuilek 8/31/1956-11/5/2016
Flintwood House, Coon Rapids, Minnesota

Peter Lee 5/7/1968-8/3/2016
Bledsoe Lane Apartments, Las Vegas, Nevada

Audrey McCaston 10/31/1972-10/11/2016
Blackbird Apartments, Kansas City, Kansas

Dane McKee 2/2/1949-10/10/2016
Eagle Crest Estates, Spokane, Washington

Raymond Parson 12/24/1945-6/16/2016
Heritage Court Apartments, Cheyenne, Wyoming

Audrey Pederson 7/25/1937-10/15/2016
David F. Day Apartments, Sartell, Minnesota

Marie Primm 8/13/1945-10/22/2016
Major Avenue Apartments, Las Vegas, Nevada

Kathleen Riley 10/14/1935-9/10/2016
David F. Day Apartments, Sartell, Minnesota

Larry Rosenberg 2/27/1939-9/14/2016
Heritage Court Apartments, Cheyenne, Wyoming

Cindy Jo Ross 6/30/1970-8/19/2016
William J. Raggio Plaza, Reno, Nevada

Dennis Saul 10/25/1944-5/23/2016
Becerra Plaza, Davis, California

Paula Schaefer 3/4/1959-5/20/2016
Meadow Lark Apartments, Great Falls, Montana

Jeffrey Shepard 4/13/1962-8/8/2016
Sandy Robinson Apartments, Las Vegas, Nevada

Steve Sydness 8/24/1947-7/12/2016
Evergreen Apartments, Brooklyn Park, Minnesota

Carol Turchin 1/5/1947-6/16/2016
Arlington Gardens Apartments, Saint Paul, Minnesota

Harold Tuss 11/30/1943-5/1/2016
Southwinds Estates, Great Falls, Montana

Leonard Vetter 1/12/1941-9/3/2016
Pasque Meadow Apartments, Sioux Falls, South Dakota

Tom Walsh 2/22/1941-8/1/2016
Chicago House, Minneapolis, Minnesota

Lizzie Westgard 7/19/1924-8/4/2016
Pasque Meadow Apartments, Sioux Falls, South Dakota

Carl Wiggins 2/21/1941-7/3/2016
John Butterworth Estates, Reno, Nevada

John Williams 2/23/1967-10/6/2016
William J. Raggio Plaza, Reno, Nevada

Mary Young 4/24/1943-10/14/2016
Rollingbrook Apartments, Baytown, Texas

Mary Ziegler 1/14/1930-10/18/2016
Wagon Crossing Apartments, Universal City, Texas

SPECIAL THANKS FOR THE SUPPORT OF ASI

Accessible Space, Inc. (ASI) continues to experience success in its fundraising activities across the United States. Buildings under development, as well as buildings open for several years, benefited from funding awards in the last six months.

In July 2016 Patriot Place Apartments (ASI Veterans Supportive Housing Development) was awarded additional **Low-Income Housing Tax Credits (LIHTC) by the Nevada Housing Division.**

Also in July 2016 The Nevada Community Enrichment Program (NCEP) received funding from the **Nevada Department of Health and Human Services, Aging and Disability Services Division (ADSD)** for indigent and/or very low-income persons with traumatic brain injuries. In August a large donation was received for services at NCEP from the **Guardian Estate of Brogan Wright.**

In August 2016 the **City of Golden Valley, Minnesota** awarded **Community Development Block Grant (CDBG) funds** for continued rehabilitation work at Pesch Place. In October the **City of Rochester, Minnesota** awarded **CDBG funds** for capital improvements at Bostrom Terrace; and the **City of Minot, North Dakota** awarded **CDBG funds** for capital improvements at Accessible Space Apartments.

In September general operating support was received via **Community Possible Focus Area: HOME** grant from **US Bancorp Foundation** for ASI's endeavors in the Twin Cities; and the **Richard M. Schulze Family Foundation** awarded general operating support to ASI.

ASI would like to thank the **Target Foundation** for their donation of general operating support awarded in October and by the **Dorsey & Whitney Foundation** for general operating support.

In November general operating support was received via **Community Possible Focus Area: HOME** grant from **US Bancorp Foundation** for ASI's endeavors in Central Minnesota. The **Microsoft Corporation** gave an in-kind donation of computer software.

In conjunction with ASI's annual mission support luncheon and year-end giving campaign, ASI would like to thank the **Berg Family Fund**; and the **Wiggins Foundation, Inc.** for providing substantial matching funds; and all the individual donors.

On behalf of the Board, residents and staff of ASI, we offer our sincere thanks to those individuals and organizations providing support during the past several months. The support provided by these individuals, foundations, corporations and government agencies is critical in ASI's continued development of accessible, affordable housing and supportive care services across the United States.



Improvements at Pesch Place: New flooring and bathroom renovations



Accessible Space, Inc. (ASI) participates in the Combined Federal Campaign (CFC), a voluntary workplace giving campaign for all federal employees. Please contribute to ASI through your local CFC organization using Accessible Space or our code #93164 to donate online.

E-NEWSLETTERS

If you're interested in receiving the ASI's e-newsletter, please visit our website, www.accessiblespace.org and click the "join our e-mail list" option at the top of the screen.

TRACEY WHITE FOUND HER HOME WITH ACCESSIBLE SPACE, INC.



Born with Spina Bifida, Tracey grew up in a home with the support of parents and siblings who encouraged her independent spirit. When she was ready for more independence, Tracey left her home in Pennsylvania and traveled to St. Cloud, Minnesota where she found an accessible, affordable home - with care when she needs it - at Accessible Space, Inc. She said her new home "lets me be myself."

As a supporter of Accessible Space, Inc., your generosity opens doors to homes and provides the necessary care for people like Tracey. A gift from you helps us to continue to meet this tremendous need.

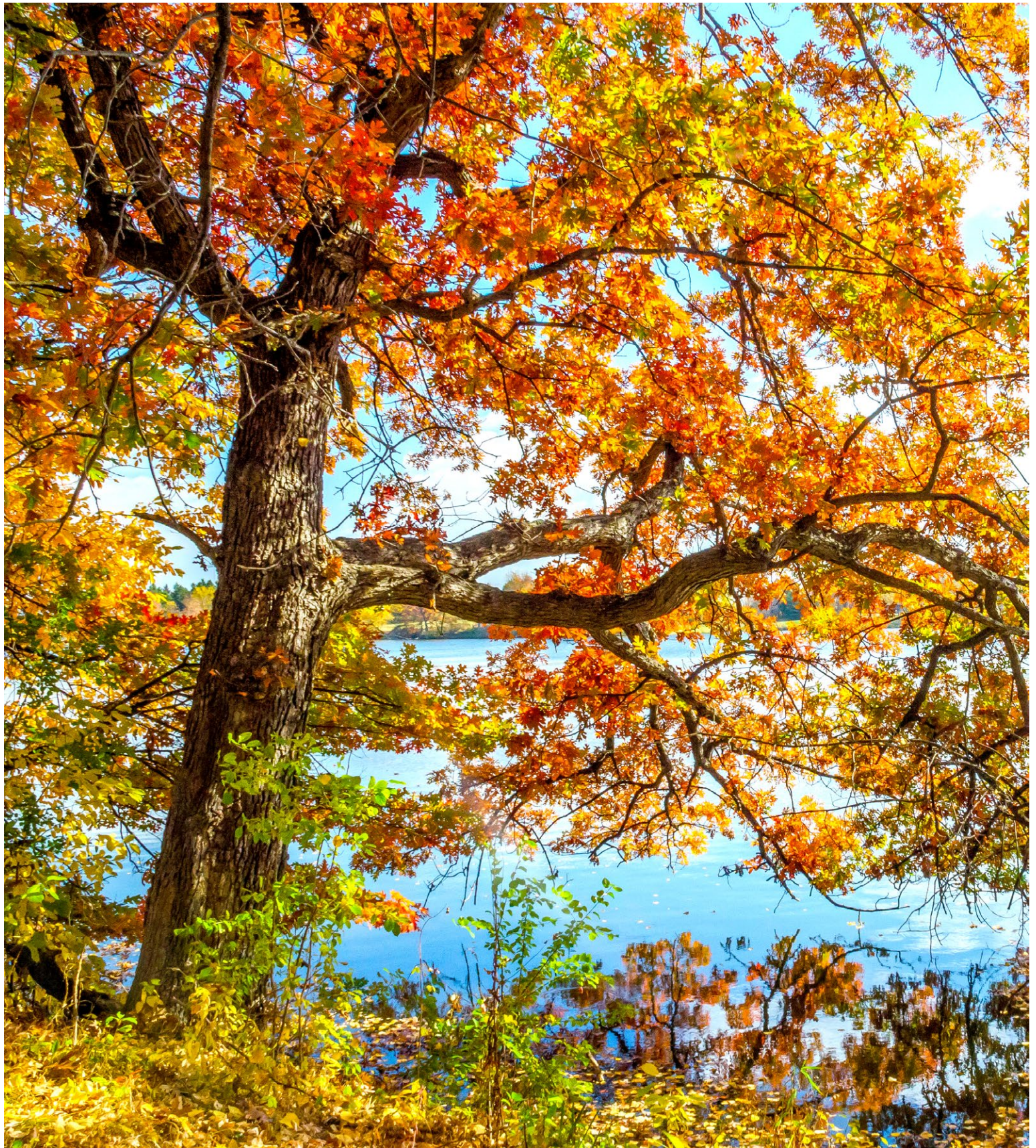
We invite you to participate in our year-end giving campaign. Visit www.accessiblespace.org to give on-line or mail your gift to:

Accessible Space, Inc.
Attn: Fund Development
2550 University Avenue West
Suite 330N
St. Paul, MN 55114

Name _____ Address _____
City _____ State _____ Zip _____
E-Mail Address _____ Telephone # _____

Enclosed is my check payable to Accessible Space, Inc. (Please do not enclose cash.) **Thank You.**
Your donation to Accessible Space, Inc. is tax-deductible to the fullest extent allowed by law.
Tax ID # 41-1330242

Together we can change lives, open doors and provide "housing with care."



Accessible Space, Inc.

2550 University Avenue, Suite 330 North
St. Paul, Minnesota 55114

(651) 645-7271 • 1-800-466-7722 • fax (651) 645-0541
TDD/Voice 1-800-627-3529

www.accessiblespace.org



"Housing with Care"®

