

NEWS TO FRIENDS OF Accessible Space, Inc.



Fall 2017

Volume 34

Number 1

In This Issue

- NCEP Celebrates its 25th Anniversary
- NCEP Graduate Josh Lewton
- Patriot Place Apartments Opens in Las Vegas, Nevada
- Voyageur Apartments Holds Open House/Dedication
- Capital Improvements to ASI Buildings
- Diane Vandeberg Retires from ASI
- ASI Celebrates Stephen Vander Schaaf's 35th Anniversary
- Jerry Serrano's Story
- Opportunities to Support ASI
- Ruby Duncan Manor
- We Raised Some Fun At A Taste For Space
- Save The Date: Mission Support Luncheon
- US Bank Nonprofit Group Volunteers Resident Spotlight: Steve Harns
- Resident Spotlight: Steve Harns
- In Memoriam: Bill Trautz
- In Memoriam: Mike Bjerkesett
- In Memoriam: David Kelly
- In Memoriam
- Annual Appeal
- Special Thanks for the Support of ASI
- ASI's New Website



Thank you to the luncheon's guests and generous donors who supported the mission of ASI and NCEP in Nevada.

NCEP CELEBRATES ITS 25TH ANNIVERSARY

On July 27, 2017 Accessible Space, Inc.'s (ASI) Nevada Community Enrichment Program (NCEP) celebrated its 25th anniversary with a mission support luncheon.

The celebration was held at Canyon Gate Country Club in Las Vegas, Nevada. During lunch, guests heard mission testimonials and poignant stories from NCEP's team including: Devin Connelly-Vander Schaaf, ASI's Public Relations and Marketing Coordinator; Stephen Vander Schaaf, ASI's President/CEO; Jerry Kappeler, ASI's Director of NCEP; Jerry Serrano, NCEP Graduate; Eileen and Isabel Kaplan, Parent and NCEP Graduate, respectively; and Jacque Rooney, ASI's Fund Development Associate.

NCEP's mission video premiered at the luncheon. The video features five persons served by ASI/NCEP and their stories of determination.

ASI/NCEP would like to thank the volunteer table hosts who invited their family, friends and work associates to our event. A big "Thank You" to the sponsors of the event: Creative Design Architects, Inc. (CDAI); Eco Electric; Idaho Nevada Community

PLEASE sign-up for our e-mail newsletter by going to www.accessiblespace.org and clicking on "join our e-mail list" at the top of the screen.

The mission of **ACCESSIBLE SPACE, INC. (ASI)** is to provide accessible, affordable, assisted/supportive and independent living opportunities for persons with physical disabilities and/or brain injuries, as well as seniors.
"Housing with Care"®

ASI Administrative Offices are located at
2550 University Avenue West, Suite 330N, St. Paul, Minnesota 55114
(651) 645-7271 • FAX (651) 645-0541 • 1-800-466-7722
TDD/Voice 1-800-627-3529 • www.accessiblespace.org



Development Financial Institution (CDFI); and Ovation Development Corporation.

Thank you to luncheon's guests and generous donors who supported the mission of ASI and NCEP in Nevada.

Below are some of the guests attending NCEP's 25th Anniversary Celebration.





Eileen and Isabel Kaplan



Jerry Kappeler and Jerry Serrano



Eric Huffman, Executive Director of Over the Rainbow Association with Stephen Vander Schaaf, ASI's President/CEO



Susan Peterson, Constituent Services Director, Congresswoman Dina Titus

STAFF SPOTLIGHT

Josh Lewton



Josh had a “full blown stroke” at age 11. Two years ago he had another incident that was like a stroke. Josh went through rehabilitation at NCEP as a client. His first day at NCEP he had a walk-through. “My brain wasn’t quite there, I was a little foggy, but I knew this was the place to be. The energy was great and I knew this was where I wanted to be for my rehabilitation.”

Josh grew up in Las Vegas and was working as a downtown concierge when he had his second stroke incident. His goal during rehabilitation at NCEP was to get back to work and get back into society. Josh feels fortunate to have a diagnosis of “higher level” functioning after his stroke. He was at NCEP for two months and the rehabilitation helped him regain life skills so he could return to work. NCEP’s therapy in the areas of physical, occupational, cognitive and speech definitely helped Josh resume his life.

Josh now works for NCEP in the Community Rehabilitation Services Program (CRS) where people are helped after a traumatic brain injury to get back into society. In CRS the population is assisted

with household living skills, navigational skills and detailing life again so after they graduate they can reintegrate into society.

The five therapies in the CRS Program are: household management training; behavior management; community safety; navigational skills and public transportation; and socialization skills.

Josh has experienced both sides of therapy as a receiver of CRS and as a staff member working with the CRS population. Josh has assisted in the rehabilitation of at least 50 NCEP clients. Many clients came in barely walking or in wheelchairs. All 50 people Josh has helped have walked out by themselves or with assisted walking. “It’s been really inspirational. This has been one of the most inspirational jobs I’ve ever had. It makes me feel really good, I’m helping people get back into life after a traumatic experience that they’ve had and it’s definitely a very emotional place. We do graduations and those are super emotional in a good way.”

E-Newsletters

If you’re interested in receiving the ASI’s e-newsletter, please visit our website, www.accessiblespace.org and click the “join our e-mail list” option at the top of the screen.

PATRIOT PLACE APARTMENTS OPENS IN LAS VEGAS, NEVADA

Accessible Space, Inc. (ASI) is pleased to announce that Patriot Place Apartments, an accessible, affordable supportive housing community with a priority preference for qualifying U.S. Veterans was completed on July 28, 2017. Located at 4245 South Pecos Road in Las Vegas, Patriot Place Apartments has 41 one-bedroom and nine two-bedroom apartments which, respectively, provide 730 sq. ft. and 960 sq. ft. of living space.

Patriot Place Apartments provides rental assistance/subsidy which will ensure resident paid rents are truly affordable, thanks to Project Based Vouchers provided by the Southern Nevada Regional Housing Authority (SNVRHA). In addition, 13 apartments are fully furnished and set-aside specifically for low-income veterans with a disability who are facing the challenges of homelessness. With special funding from the Veterans Administration Supportive Housing Program (VASH), ASI is honored to be the first, affordable housing community in Nevada to provide permanent supportive housing

and project-based, VASH vouchers at Patriot Place Apartments.

A service-enriched, permanent supportive apartment community, Patriot Place Apartments offers a wide range of supportive housing services to residents, including: information/referral services; social and recreational activities; case management services; vocational, educational, and life-skills training services; and accessible, round-trip transportation to local retail outlets three times each week. Services will be available from a variety of providers, including Nevada Partners, ASI's Nevada Community Enrichment Program (NCEP), and the Veterans Administration (VA). ASI will also provide an on-site Service Coordinator along with on-site management and maintenance personnel.

Patriot Place Apartments offers a large, multipurpose community room with a warming kitchen, a hobby/activity room, computer lab, a library, an exercise room, and therapeutic spa rooms with walk-in tubs for resident use. A large outdoor courtyard and patio with a pergola and ample shaded seating, as well as an outdoor BBQ grill provide additional exterior common areas for resident use. All interior and exterior common areas at Patriot Place Apartments are designed to maximize wheelchair accessibility, including a hands-free controlled access main entrance, oversized elevator with accessible call buttons, automated push-plate or power-assisted



To apply for housing online, click on the housing link at the top of this page: <http://www.accessiblespace.org/>

doors, automated trash chute, six-foot wide hallways and fully accessible public rest rooms.

Twenty-five (25) apartments are fully wheelchair accessible and include custom-designed, oversized roll-in showers, adjustable closet shelves, roll-under counters and sinks in the kitchen and bath, and front loading washers and dryers, among other amenities.

ASI gratefully acknowledges the following organizations for their funding and/or support of Patriot Place Apartments: Nevada Housing Division's Low Income Housing Tax Credit Program (LIHTC); Clark County Community Resources Management HOME Program; Federal Home Loan Bank of San Francisco's Affordable Housing Program/City National Bank; Wells Fargo Bank Priority Markets Grant; US Bank National Association; US Bancorp Community Development Corporation, Southern Nevada Regional Housing Authority; Veterans Administration; Nevada Partners, and Nevada Community Enrichment Program.



Accessible kitchen in Patriot Place Apartments



Community room in Patriot Place Apartments

VOYAGEUR APARTMENTS OPEN HOUSE AND DEDICATION CEREMONY



On June 23, 2017 an Open House and Dedication Ceremony was held at **Voyageur Apartments** in **Great Falls, Montana**. This 38 unit accessible, affordable apartment building was completed on June 21, 2016.

Ken Berry, ASI's Director of Property Management, served as Master of Ceremonies. Ken welcomed guest speakers the Honorable Bob Kelly, Major, City of Great Falls; Jeff Arbizzani, Market President – Helena, Montana, U.S. Bancorp; Steve Harns, resident of Voyageur Apartments; and the Honorable Steve Bullock, Governor of Montana.

Following the ceremony refreshments were served and building tours were given.

Voyageur Apartments began construction on April 6, 2015. Voyageur Apartments received Low-Income Housing Tax Credits (LIHTC) from the Montana Board of Housing (MBOH), Housing Tax Credits Program. Voyageur Apartments is an independent living senior housing community for adults 55 and older including the frail elderly with physical disabilities. Of the total 38 units, eight (8) resident units are fully wheelchair accessible.

ASI would like to thank the City of Great Falls for their commitment of HOME Program funds; the Montana Department of Commerce (MDOC) Home Investment Partnerships Program (HOME); the Federal Home Loan Bank of Chicago's Affordable Housing Program with assistance from Bremer Bank

and Banker's Bank of Wisconsin; the Montana Board of Housing (MBOH), Housing Credits Program; U.S. Bancorp Community Development Corporation; and the U.S. Bank National Association. A special thank you is also extended to our LIHTC consultants, Eric Novak and Dr. Hilary Lopez of Praxis Consulting Group, LLC; and Eileen Piekarz of Rural Community Assistance Corporation (RCAC).

Our thanks are also extended to Oswood Construction, General Contractor; Distyle Design, Architect; and Tamarack Property Management, Management Agent.

Voyageur Apartments is located at 1630 Division Road adjacent to ASI's Meadow Lark Apartments. Voyageur Apartments is near social services, shopping, pharmacies, restaurants, banks, churches and a library.

Voyageur Apartments joins three (3) other accessible, affordable ASI buildings in Great Falls; and eight (8) accessible, affordable ASI buildings in Billings, Bozeman (2), Helena (2), Kalispell and Missoula (2).



Voyageur residents with Montana Governor Steve Bullock



Bob Kelly, Mayor, City of Great Falls



Jeff Arbizzani, U.S. Bancorp



To apply for housing online, click on the housing link at the top of this page: <http://www.accessiblespace.org/>

CAPITAL IMPROVEMENTS TO ASI BUILDINGS

Over the last nine months Accessible Space, Inc. (ASI) staff has been busy with rehabilitation and energy upgrade projects. Improvements to the following ASI properties helps prolong the life of these HUD subsidized apartments buildings.

Work has continued on **Pesch Place in Golden Valley, Minnesota**. Rehabilitation funds were provided through the City of Golden Valley/ Hennepin County CDBG Consolidated Pool. Pesch Place consists of five units of accessible, affordable housing for adults with physical disabilities. The building is within an easy roll/walk of Courage Kenny Rehabilitation Institute (formerly Courage Center). Originally constructed by Courage Center, Pesch Place was acquired in 1993. Work to be completed includes bathroom renovations, replacement of floor coverings in common areas, replacement of retaining wall and replacement of accessible path to lower level.

Pesch Place is named for Michael Pesch. In 1975, Michael Pesch broke his neck in a drought-shallow lake in northern Minnesota and, as a result, was paralyzed for the rest of his life. Following a time at Courage Center, Michael was ready to move on, but his options were too limited, so with the support of his friends, Steve Wiggins, Charles Berg and Stephen Vander Schaaf, Michael became a force behind accessible, affordable housing for people with mobility impairments which led to the founding of ASI in 1978.



New accessible bathroom at Hastings House

Winston Courts Apartments in Hibbing, Minnesota and **Redruth Valley Apartments in Duluth, Minnesota** were recently refinanced which included funding for renovations to both buildings.

In Spring 2016 Winston Courts Apartments received approval from St. Louis County to proceed with further renovations to this 18 unit, accessible, affordable building which opened in June 1989. Renovations will be completed using funds from a Community Development Block Grant (CDBG) by St. Louis County Community Development and funds from the HUD reserve for replacement account for the building, as well as refinancing funds. The building also received funds from St. Louis County in 2012 to improve the common areas of the building.

Current renovations to 15 of the apartments in Winston Courts include new carpeting, vinyl flooring and appliances in the resident units. Repairs to the building structure include modernization of the elevator, siding replacement and replacement of the boiler.

The renovations at Redruth Valley Apartments include replacing the boilers for the building's heating system; pressure wash and repair the deck; and repair, seal coat and restripe the parking lot.

Galaxy Apartments in Rapid City, South Dakota has received City of Rapid City of South Dakota CDBG funding to replace the building's windows.

Eagle Watch Estates in Missoula, Montana has been awarded City of Missoula, Montana CDBG Program funds to upgrade the building's elevator.

The **Nevada Community Enrichment Program (NCEP)** has made progress on a couple of projects in Las Vegas:

Hastings House, a residential home for some of the population being served by NCEP, remodeled a pool house on the property so additional bedrooms could be added to Hastings House. Approval from Nevada state inspectors has been received and Hastings House now serves eight (8) total residents.

Pool Demolition and Infill -The pool was unusable and filled in to provide a large room for therapy. It is now finished and NCEP is purchasing rehabilitation equipment.

DIANE VANDEBERG RETIRES FROM ASI

On September 8, 2017 Diane retired from Accessible Space, Inc. (ASI) after 20 plus years of dedicated services to ASI's "housing with care" mission.

Diane joined ASI as the Brain Injury Programs Administrator in January 1997. Diane graduated from the University of Minnesota. Prior to ASI, Diane worked with people with a variety of challenges such as physical disabilities, brain injuries, developmental disabilities, mental illness and chemical dependency.

Diane especially enjoyed her work at ASI's Shared Living Homes. The population served are

adults with traumatic brain injuries who are unable to live independently. Diane will miss the residents and staff who made each day special.

Diane plans on spending her days caring for her new granddaughter and promises to stop in for a visit!



ASI CELEBRATES STEPHEN VANDER SCHAAF'S (SHEP) 35TH ANNIVERSARY



On June 28, 2017 Accessible Space, Inc. (ASI) celebrated Stephen Vander Schaaf's (Shep) 35th anniversary as the organization's President/CEO. Shep was presented with an plaque commending him for his dedicated leadership, vision and service. A PowerPoint history played as staff enjoyed a light breakfast.

In 1982, ASI consisted of five six-unit homes in Minneapolis and Saint Paul, Minnesota with plans to grow. Shep's first office was in the basement at Chicago House in South Minneapolis. Somedays Shep filled in as a Resident Assistant when an extra hand was needed.

Construction began on those first five buildings in January 1980. Maynard Bostrom, the first occupant moved into Chicago House in September 1980.

As Shep wrote in the first issue of **News to Friends of Accessible Space, Inc.**, published in January 1983, "Accessible Space, Inc. is designed as an alternative to institutional living for physically handicapped adults who require support services. The ASI concept began with the belief that many handicapped adults are able to judge, manage and direct the services they need." ASI's philosophy remains though today's politically correct wording refers to adults with disabilities.

During 1982 ASI operated on an annual budget of \$600,000 and had a staff of 60 employees. The 2017 annual revenue budget for ASI and its 120 nonprofit affiliates is over \$36.5 million. ASI currently has a staff of 568 in 25 states.

During Winter 1987 ASI's offices moved to the third floor of the Court International Building. ASI moved from Suite 301N to 330N (our current home) in 1995. Since the move to 330N ASI's offices have expanded into two adjacent suites. Approximately 55 administrative staff work out of ASI's offices at 2550 University Avenue West, Saint Paul, Minnesota 55114.

Congratulations, Shep!

JERRY SERRANO'S STORY



Jerry Serrano speaking at the NCEP 25th Anniversary Celebration.

April 3, 2010 was a memorial day for me. As I was leaving a friend's house I had an unfortunate accident. I fell off of a wall between 9-12 feet high and landed directly on my head. This fall caused multiple fractures to my skull, including hemorrhages and herniations on my brain. My head was dangerously swollen and my skull was removed just to relieve the pressure.

The doctors induced me into a coma for one week until my reflexes came back. I was then sedated for at least ten more days. My life was at risk and I was given a 1% chance to survive. Miraculously, I did survive, but my journey was just beginning.

I had to learn to breathe again on my own, fight infections and keep myself moving to avoid stiffness and bed sores. I had to learn to drink liquid with thickener and eat food again by chewing more and not swallowing foods whole.

I was in the hospital for a total of five months before I was discharged home. I left the hospital on a Friday and started at the Nevada Community Enrichment Program (NCEP) the following Monday. When I was discharged I could not walk and I was in a wheelchair. Also, I could not speak clearly and people had difficulty understanding me. When I started at NCEP I wasn't sure what the process was for my recovery. My first experience at NCEP was being met with a welcoming love by the rehabilitation staff. The rehabilitation staff believed in me and shared positive motivation to apply myself and believe in unlimited possibilities and opportunities. I want to give my testimony because the loving, caring and expertise of all the staff

involved at NCEP. They taught me to overcome my limitations and develop into the man I am today.

In speech therapy I learned to slow down my speech and speak clearly because I was cramming all of my words together to make it sound like one big word. People had difficulty understanding me. I still needed to thicken my drinks to swallow correctly, but through my work with speech therapy I was able to again drink regular liquids like water and Gatorade.

In cognitive therapy they helped me put my sentences in order and my thoughts in a real world process to achieve my goals.

In physical therapy, I arrived at NCEP in a wheelchair. My balance was horrible. I had to have staff walk with me everywhere. I wore a gait belt for almost two months so that staff could hold onto me and stop me from falling. My whole left side had to be re-trained because my body was not listening to my brain. Small steps turned into big steps. My left hand had nerve damage and I had difficulty using it in everyday life. Eventually, through physical therapy I was able to walk on my own and go outside and enjoy life again. I made amazing progress while I was at NCEP.

But, my journey still hasn't ended. I learned at NCEP that people helping each other is the most important thing we can do in our lives. Now I help others through my online support group United Loving Warriors. I created United Loving Warriors because NCEP taught me to believe in myself and now I am teaching others to believe in themselves. I teach them to never give up and that anything is possible if you have the desire and determination to move forward.

At NCEP I met my goals and it changed my life.



Jerry Serrano said, "The doctors induced me into a coma for one week until my reflexes came back."

OPPORTUNITIES TO SUPPORT ASI

EMPLOYER MATCHING GIFTS

Many employers sponsor matching gift programs and will match any charitable contributions made by their employees.

If your company is eligible, request a matching gift form from your employer, and send it completed and signed with your gift. Accessible Space, Inc. will do the rest.

The impact of your gift to our mission may be doubled or possibly tripled! Some companies match gifts made by retirees and/or spouses, as well.

HONOR A LOVED ONE OR SPECIAL FRIEND

Pay tribute or honor a special person's birthday, anniversary, or other special occasion, with a Memorial or Honorarium gift to Accessible Space, Inc.

Your name, as the donor, and the person being honored, will be acknowledged in ASI publications.

SPONSOR, HOST, OR ATTEND OUR UPCOMING EVENTS TO BENEFIT ACCESSIBLE SPACE, INC.

To learn how you can get involved, contact Jacque Rooney, ASI's Fund Development Associate, at

1-800-466-7722 or 651-645-7271, ext. 252
email to jrooney@accessiblespace.org

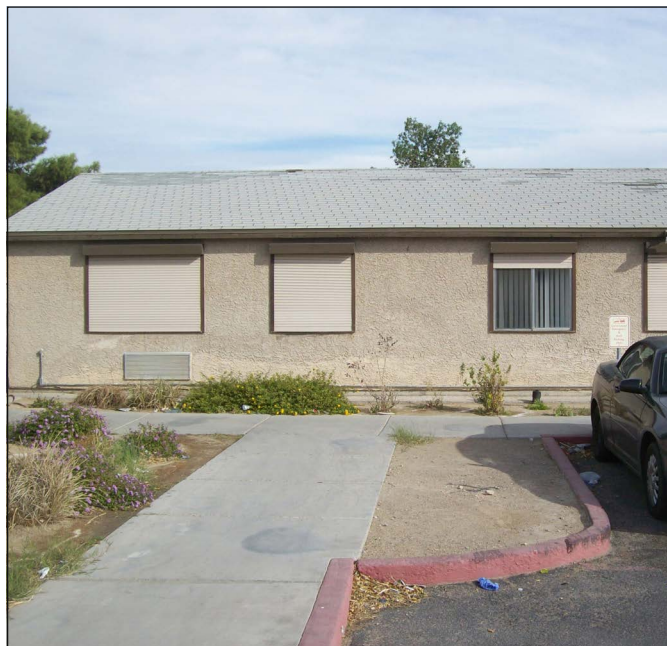
RUBY DUNCAN MANOR

On September 1, 2017 Accessible Space, Inc. (ASI) assumed management of Ruby Duncan Manor, a 30 unit affordable housing complex located at 500 W. Owens Avenue, Las Vegas, Nevada 89106. This one story development has 3 residential and a common area building which includes a management office. There are 8 efficiency apartments and 22 one-bedroom apartments.

Ruby Duncan Manor was funded under the HUD Section 202 Program and received its Certificate of Occupancy in December 1987. All units receive HUD rental assistance funding. Ruby Duncan Manor currently has 27 occupied units and 3 vacancies. The resident population is very low-income seniors aged 62 and over.

ASI maintenance staff completed a review of Ruby Duncan Manor in November 2016. An estimate of \$325,000 was stated as the amount needed for refurbishing the building.

ASI owns and manages 18 accessible, affordable apartment buildings in the Clark County Metropolitan Area.



Accessible Space, Inc. assumed management of this distressed property, Ruby Duncan Manor. Refurbishing is estimated to cost \$325,000.

WE RAISED SOME FUN AT A TASTE FOR SPACE



Great craft beer, pizza and fabulous prizes!

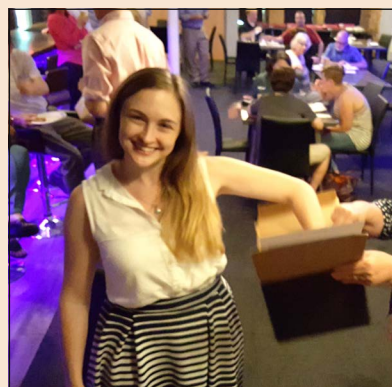
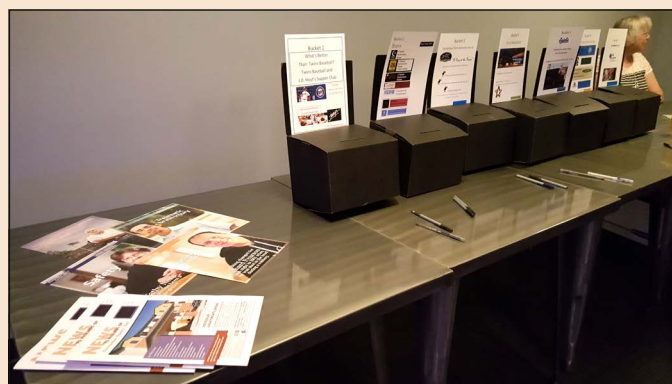
We had it all at our 6th annual *A Taste for Space* at Sisyphus Brewing in Minneapolis on June 20, 2017.

A big Thank You to Sisyphus Brewing for opening their doors and promoting our event. Sisyphus crafts a variety of beer which were available by the glass or in flights so several varieties could be sampled.

Pizza was provided for guests as well. Sisyphus is located near Dunwoody Institute and just north of the Walker Art Center Sculpture Garden. A raffle for prizes added to the fun. Thank you to these generous raffle donors: Maguire Agency, Saint Paul Saints, Guthrie Theater, Yellow Tree Theatre, Illusion Theater, Chanhassen Dinner Theater, Stepping Stone Theater, Park Square Theater, Minnesota Orchestra, Canterbury Park, Mall of America, Radisson Blu at Mall of America, Dubliner Pub and Café, Grand Casino, Spring Valley Golf Club, Treasure Island Resort & Casino, New Richmond Golf Club, Park Tavern, Loriann Granados and Sisyphus Brewing.

ASI's Fund Development Advisory Committee, a group of community volunteers, hosted this great event to raise awareness of our mission to provide accessible, affordable, "housing with care" for people with disabilities and for seniors. Thank you to these volunteers.

Please join this group of dedicated volunteers for their next event to benefit Accessible Space, Inc. Contact Jacque Rooney, Fund Development for ASI at 1-800-466-7722 or 651-645-7271, ext. 252; or via email at jrooney@accessiblespace.org to learn how you can help.



SAVE THE DATE

7th Annual Mission Support Luncheon

Thursday, October 5, 2017

from Noon to 1:00 p.m.

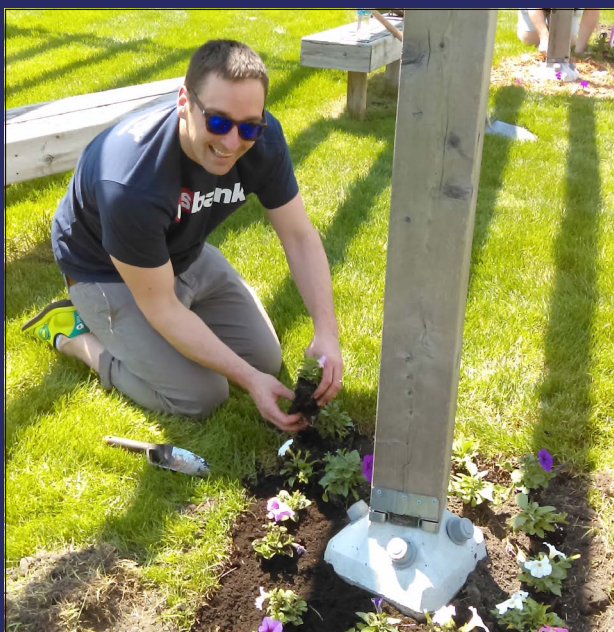
Town and Country Club

300 Mississippi River Blvd. N.

St. Paul, Minnesota 55104

U.S. BANK NONPROFIT GROUP VOLUNTEERS

On May 12, 2017 a group of U.S. Bank Nonprofit Group volunteers did yard clean-up at Arlington Gardens Apartments in Saint Paul, Minnesota. The volunteers were Dave Swanson, Brian Brophy, Dan Smith, Bryan Ljung, Jon Clevinger and Vicky Shipley. Thank you!



RESIDENT SPOTLIGHT

Steve Harns



Steve Harns is a resident of Voyageur Apartments in Great Falls, Montana. Originally from the Ozarks in Missouri, Steve arrived in Great Falls with \$30 to his name and was homeless. Steve is a veteran. He received assistance from Volunteers of America (VOA) and was able

to receive Social Security. VOA connected him with a Veterans Administration Supportive Housing (VASH) voucher and also assisted him with paying his rent for three months.

Steve has great things to say about the Great Falls community and enjoys living at Voyageur Apartments.

IN MEMORIAM:

Bill Trautz

William B. "Bill" Trautz, Jr. passed away on July 25, 2017. Bill was a long-term resident of Accessible Space, Inc. (ASI), first at Iglehart in St. Paul, Minnesota, then at Roselawn Village Apartments in Roseville, Minnesota.

Bill volunteered for numerous community groups over the years, and advocated his entire life for people with physical disabilities.



Stephen Vander Schaaf with Bill Trautz

IN MEMORIAM

Mike Bjerkesett

Mike Bjerkesett passed away on January 18, 2017. He was an extraordinary, humble man of many talents: entrepreneur, innovator, creator, activist, mentor, leader, philanthropist. For decades he was dedicated to improving the lives of people with disabilities.

Graduating from Fridley High School he was named to all conference and all state in football. He attended Bemidji State University until a car accident in 1967 resulted in paraplegia. After his recovery he earned a bachelor's degree in business from Southwest Minnesota State University (SMSU), and then worked at North Memorial Hospital as a rehabilitation counselor, a position he created while also becoming a leader of community, handicap accessibility activists.

In 1974 he formed his first nonprofit, the United Handicapped Federation, and in 1975 the second, the National Handicap Housing Institute (NHHI) where he served as Executive Director until his retirement in 2014. Known to be one of the nation's leading accessible housing developers, NHHI designed and built more than 15,000 accessible, affordable housing units throughout the nation. Mike was honored with numerous awards and worked with ASI on 15 accessible, affordable housing developments in four states.

After retirement, Mike's passion for the handicapped continued as he formed another nonprofit, Accessible Architecture, Inc. which provided state of the art barrier free designs at no cost and resources via the internet.



Stephen Vander Schaaf, Mike Bjerkesett and Steve Wiggins

IN MEMORIAM:

David Kelly



David Kelly was supposed to die at age 6. "My mother took me to the hospital in 1949. I got the last rites and the whole bit, and they put me on the iron lung, and three years later I was out of the iron lung," Kelly says. "They put me in a wheelchair and said I'd never walk. About a year and a half later, I was walking. Sixty-seven years later, here I am still."

Over the course of his life, David waged a 14-month-long battle with bladder cancer, had his gallbladder removed - along with two feet of his lower intestine - and contracted diabetes.

David passed away in February 2017 after defying doctor's diagnosis for decades.

David moved to Lake Tahoe from Los Angeles in 1987 and over his time in the Basin facilitated the creation of three housing developments for seniors and residents with disabilities. He counted South Lake Tahoe's Tahoe Senior Plaza, Kelly Ridge and Sky Forest Acres* - an 18-unit neighborhood for people with disabilities - among his life accomplishments.

David was also one of the founding members of the Tahoe Area Coordinating Council for the Disabled (TACCD), a South Shore-based nonprofit organization that advocates on behalf of Tahoe's disabled population and co-sponsored Sky Forest Acres with ASI.

*Sky Forest Acres is owned and managed by Accessible Space, Inc.

IN MEMORIAM

ASI is saddened by the passing of 49 residents over the past 10 months. We will miss our friends and the spirit they brought to ASI.

Lenora Amato 5/5/1951 - 1/31/2017
Carol Haynes Apartments, Las Vegas, Nevada

Mary Barton 5/30/1967 - 7/14/2017
Harbor View Terrace, Fullerton, California

Harold Baumann 3/13/1979 - 6/22/2017
River Bluff Apartments, Shakopee, Minnesota

Rose Bernetto 2/20/1936 - 11/20/2016
Coronado Drive Apartments, Henderson, Nevada

Nalini Blumer 11/28/1975 - 1/21/2017
The Harry & Jeanette Weinberg Hale Kuha'o, Waipahu, Hawaii

Paul Bredfeldt 9/15/1962 - 7/30/2017
Prairie Sky Apartments, Austin, Minnesota

Jeanmaria Byrd 10/29/1961 - 6/26/2017
The Sanderling, Chesapeake, Virginia

Joann Cannon 10/23/1949 - 7/21/2017
Coronado Drive Apartments, Henderson, Nevada

Tommy Carter 5/14/1953 - 3/29/2017
Twin Rivers Apartments, Greeley, Colorado

Don Coffin 6/13/1960 - 5/1/2017
Sky Forest Acres, South Lake Tahoe, California

Frank Crisotomo 7/25/1943 - 4/19/2017
Harmony Road Apartments, Ft. Collins, Colorado

Wilda Donson 10/28/1933 - 4/29/2017
The Portage, Great Falls, Montana

Neil Edelstein 5/21/1958 - 12/4/2016
Evergreen Apartments, Brooklyn Park, Minnesota

Richard Freude 9/10/1962 - 9/3/2017
Chicago House, Minneapolis, Minnesota

James Gallagher 6/7/1960 - 2/20/2017
Tribute Commons, Hudson, Wisconsin

Timothy Gassman 2/17/1961 - 4/12/2017
Northland Apartments, Fargo, North Dakota

Rufus Graham 7/29/1959 - 1/2/2017
Iglehart Home, Saint Paul, Minnesota

Norma Gresham 5/15/1951 - 2/23/2017
Oak Forest Heights, San Antonio, Texas

James Hawk 3/30/1951 - 12/8/2016
Melissa Anne Hanger Apartments, Topeka, Kansas

Diana Holmes 7/22/1953 - 2/22/2017
John Butterworth Estates, Reno, Nevada

Leroy Hutchinson 1/29/1948 - 12/9/2016
Tonopah Lamb Apartments, Las Vegas, Nevada

Eleanor Jones 8/14/1955 - 6/3/2017
The Sanderling, Chesapeake, Virginia

Anna Kees 8/5/1958 - 3/6/2017
Henry Harbour, Corpus Christi, Texas

Michael Kosciulek 8/31/1956 - 11/5/2016
Flintwood Home, Coon Rapids, Minnesota

Jourdan Larun 2/13/1952 - 11/28/2016
Aspen Village Apartments, Helena, Montana

Debra Lochrie 8/3/1960 - 11/28/2016
Eagle Watch Estates, Missoula, Montana

Jose Lucero 2/27/1965 - 8/4/2017
Coronado Drive Apartments, Henderson, Nevada

Apisa Maaee 1/3/1978 - 3/20/2017
The Harry & Jeanette Weinberg Hale Kuha'o, Waipahu, Hawaii

Linda Martin 2/9/1952 - 01/01/17
George & Lois Brown Estates, Henderson, Nevada

Steve Nolan 9/14/1951 - 1/16/2017
Tim O'Brien Apartments, Springfield, Missouri

Debra Oppenheim 8/9/1947 - 12/24/2016
Coronado Drive Apartments, Henderson, Nevada

Bernadette Pirk 2/26/1934 - 7/23/2017
Arlington Gardens Apartments, Saint Paul, Minnesota

Arthur Pittman 6/22/1953 - 2/7/2017
The Anchorage, Norfolk, Virginia

Beth Riedeman 1/2/1942 - 8/26/2017
Frontier Apartments, Dickinson, North Dakota

Sandra Richey 11/19/1942 - 12/1/2016
Dogwood Terrace, Florence, Alabama

Stella Sandridge 1/15/1963 - 6/17/2017
Vista Villa Apartments, Pasadena, Texas

Doris Schussler 1/24/1923 - 5/22/2017
Eagle Watch Estates, Missoula, Montana

Jean Shernell 3/20/1933 - 1/10/2017
Autumn Trails of Rogers
Rogers, Minnesota

Scott Shumaker 8/25/1965 - 3/7/2017
R.J. Plitz Vista Bonita, Mesa, Arizona

Don Sitters 3/5/1964 - 5/29/2017
Winston Courts Apartments, Hibbing, Minnesota

Judy Slavik 3/6/1950 - 2/2/2017
Roselawn Village Apartments, Roseville, Minnesota

Marlene Staigmiller 12/25/1937 - 11/23/2016
The Portage, Great Falls, Montana

Richard Steele 7/15/1954 - 3/12/2017
Hillcrest Apartments, Stillwater, Minnesota

Gerald Torsey 6/25/1950 - 4/11/2017
Tangle Brush Villa, The Woodlands, Texas

Linda Titus 3/29/1949 - 2/18/2017
Oak Forest Heights, San Antonio, Texas

Bill Trautz 10/2/1957 - 7/25/2017
Roselawn Village Apartments, Roseville, Minnesota

Phillip Uruhart 11/22/1952 - 11/22/2016
The Anchorage, Norfolk, Virginia

Karen Welsh 7/27/1950 - 3/12/2017
Henry Harbour, Corpus Christi, Texas

Robert Zelazny 3/5/1949 - 5/8/2017
Van Buren Home, Blaine, Minnesota

**“MY LIFE IS FINALLY SETTLED,” SAYS ALISHA.
“THIS A PLACE I CAN CALL MY OWN.”**

NOW IS YOUR CHANCE TO BE A PART OF OUR STORY

**PLEASE SUPPORT US AT
WWW.ACCESSIBLESPACE.ORG**

As a supporter of Accessible Space, Inc., your generosity opens doors to homes and provides the necessary care for people like Alisha. A gift from you helps us to continue to meet this tremendous need.

We invite you to be a part of our story. Visit www.accessiblespace.org to give on-line or mail your gift to:

Accessible Space, Inc.
Attn: Fund Development
2550 University Avenue West
Suite 330N
Saint Paul, Minnesota 55114



Alisha grew up with her family's mindset "You can do anything you want to do if you work at it. If someone tells us that something is impossible, we say, 'we'll see about that.'"

Born with cerebral palsy, Alisha uses a wheelchair and pursues a life of self-reliance, figuring out a different way to accomplish her goals. Alisha is determined to live a life of independence. After finding housing and services options in other locations that were less than ideal, her name rose to the top of Accessible Space, Inc.'s waiting list. She now lives in a fully accessible, affordable apartment in Minnesota and receives "housing with care" to live life on her own while getting her degree in elementary education.

"My life is finally settled," says Alisha. "This is a place I can call my own."

SPECIAL THANKS FOR THE SUPPORT OF ASI

Accessible Space, Inc. (ASI) continues to experience success in its fundraising activities across the United States. Buildings under development, as well as buildings open for many years, benefited from funding awards in the last eight months.

In January 2017 **LeadingAge Minnesota Foundation** awarded a **Workforce Solutions Grant** for Kenosha Drive Apartments in Rochester, Minnesota.

In March 2017 **First Hawaiian Bank Foundation** awarded general operating funds for The Harry and Jeanette Weinberg Hale Kuha'o in Waipahu, Hawaii.

In April 2017 the **Clark County, Nevada HOME/LIHTF Program** awarded funds for the development of ASI Veterans Supportive Housing II (ASI Vets II) in Las Vegas, Nevada. In September 2017 ASI Vets II was also awarded Low-Income Housing Tax Credits (LIHTC) by the **Nevada Housing Division**.

In May 2017 the **City of Rapid City, South Dakota** awarded Community Development Block Grant (CDBG) funds for capital improvements at Galaxy Apartments in Rapid City, South Dakota. The ASI Nevada Life Skills Program received two years of funding from the **Nevada Department of Health and Human Services' Fund for a Health Nevada** under the area of Independent Living.

Also in May the **Dorsey & Whitney Foundation** awarded general operating support.

In June 2017 the **City of Missoula, Montana** awarded CDBG funds for capital improvements at Eagle Watch Estates in Missoula, Montana.

In July 2017 **Ramsey County, Minnesota** awarded CDBG funds for capital improvements at Cedar and Snelling Homes in White Bear Lake and Falcon Heights, Minnesota respectively.

In September 2017 the **Hugh J. Andersen Foundation** awarded funds for capital improvements at Hillcrest Apartments in Stillwater, Minnesota.

On behalf of the Board, residents and staff of ASI, we offer our sincere thanks to those individuals and organizations providing support during the past several months. The support provided by these individuals, foundations, corporations and government agencies is critical in ASI's continued development of accessible, affordable housing and supportive care services across the United States.

For a complete listing of our generous donors, please visit Funding Focus at www.accessiblespace.org/giving.

New website at www.accessiblespace.org

NATIONWIDE. NONPROFIT. HOUSING AND SERVICE PROVIDER FOR ADULTS WITH PHYSICAL DISABILITIES AS WELL AS SENIORS.

FIND ACCESSIBLE HOUSING

FIND SENIOR HOUSING

FIND SERVICES

REHABILITATION CENTER

With short waiting lists

Accessible, Affordable Apartments

CLICK HERE

Independent Living Skills

AVAILABLE NOW!

Come Work With Us!

CLICK HERE FOR MORE INFO

Accessible Space, Inc.

2550 University Avenue, Suite 330 North
St. Paul, Minnesota 55114

(651) 645-7271 • 1-800-466-7722 • fax (651) 645-0541
TDD/Voice 1-800-627-3529

www.accessiblespace.org

"Housing with Care"®

