



# Accessible Space, Inc.

2550 University Avenue West, Suite 330 N | St. Paul, Minnesota 55114

## OUR MISSION HOUSING WITH CARE

The mission of Accessible Space, Inc. (ASI) is to provide accessible, affordable, assisted/supportive and independent living opportunities for persons with physical disabilities and brain injuries, as well as seniors. This mission is accomplished through the development and cost-effective management of accessible, affordable housing, as well as the provision of assisted/supportive living and rehabilitation services.

## ACKNOWLEDGEMENTS FUNDING AND SUPPORT

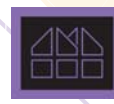
Accessible Space, Inc. (ASI) gratefully acknowledges the following organizations for their funding and/or support:

The U.S. Department of Housing and Urban Development (HUD); Clark County Board of Commissioners/HOME Program; Federal Home Loan Bank of Des Moines' Affordable Housing Program/U.S. Bank; and the Nevada Governor's Council on Developmental Disabilities.



Committed to the success of equal housing opportunities throughout the nation

ASI



Accessible Space, Inc. (ASI):  
Sponsor, Developer and  
Management Agent

## JOHN CHAMBERS APARTMENTS LAS VEGAS, NEVADA



***Accessible, Affordable Apartments For  
Adults With Qualifying Disabilities***

2030 Camel Street  
Las Vegas, Nevada 89115



**Accessible Space, Inc.**  
HOUSING WITH CARE

## JOHN CHAMBERS APARTMENTS LAS VEGAS, NEVADA

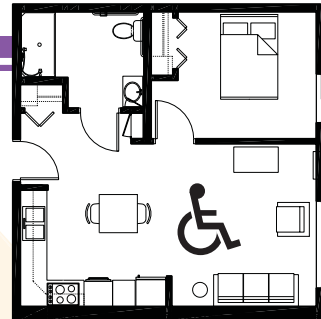
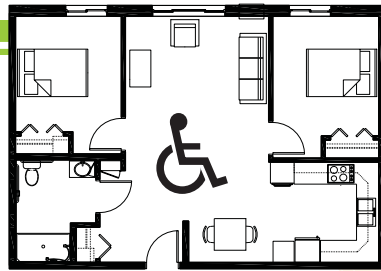
*Accessible, Affordable Apartments For Adults With Qualifying Disabilities*

### AFFORDABLE

- Qualifying households pay 30% of adjusted gross monthly income for rent
- Rent is subsidized by the U.S. Department of Housing and Urban Development (HUD)-Income limits apply
- Rent includes: Heat, water, sewer, trash & snow removal

### BASIC QUALIFICATIONS

- One household member must have a qualifying disability
- Applicants are screened for credit, rental and criminal history
- Households must be income qualified (income limits apply and security deposit required)

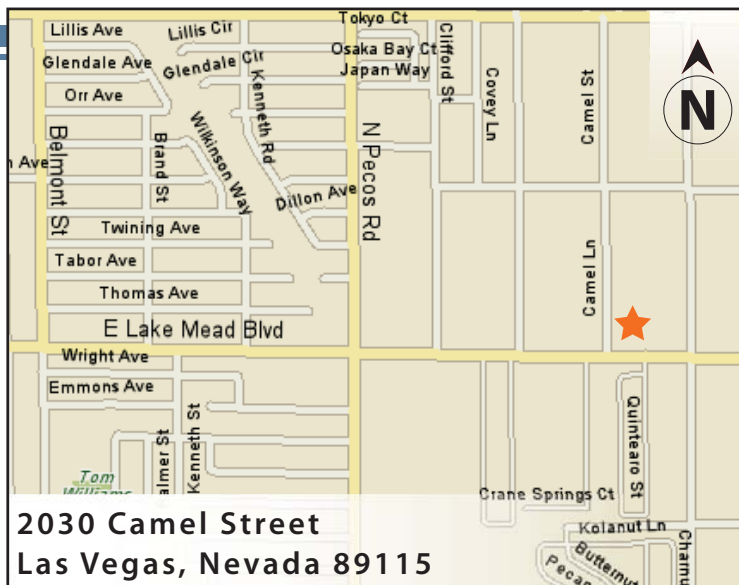


### APARTMENT FEATURES

- 25 one and two bedroom apartments
- Wheelchair accessible, spacious kitchens
- Large, accessible bathrooms
- Carpeted bedroom & living room
- Generous closet & storage space
- Roll-in showers
- Lever-action door handles

### BUILDING FEATURES

- Open entry & lobby
- Controlled access entry system
- Elevator service
- Large community room & library
- Trash chutes on each floor
- On-site laundry facilities
- Raised electrical outlets & lowered lightswitches



### CONVENIENT NEIGHBORHOOD LOCATION

- Grocery stores, shopping & restaurants
- Banking Services
- Hospitals, medical & professional clinics
- Churches

For more information or to request a housing application, please call

- toll-free 1-800-466-7722
- tty/tdd 1-800-627-3529

Apply online [www.accessiblespace.org](http://www.accessiblespace.org)

Accessible Space, Inc. (ASI)

2550 University Avenue West, Suite 330 North  
Saint Paul, Minnesota 55114

