



# Accessible Space, Inc.

2550 University Avenue West, Suite 330 N | St. Paul, Minnesota 55114

## OUR MISSION HOUSING WITH CARE

The mission of Accessible Space, Inc. (ASI) is to provide accessible, affordable, assisted, supportive and independent living opportunities for persons with physical disabilities and brain injuries as well as seniors. This mission is accomplished through the development and cost-effective management of accessible, affordable housing, assisted/supportive/independent living and rehabilitation services.

## ACKNOWLEDGEMENTS FUNDING AND SUPPORT

Accessible Space, Inc. (ASI) gratefully acknowledges the following organizations for their funding and/or support:

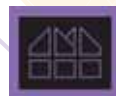
The U.S. Department of Housing and Urban Development (HUD); The State of California HOME Program; City of South Lake Tahoe; South Tahoe Redevelopment Agency; and the Federal Home Loan Bank of Des Moines' Affordable Housing Program/U.S. Bank. The Tahoe Area Coordinating Council for the Disabled, Inc. was the Co-Sponsor for Sky Forest Acres.

**TACCD**



Committed to the success of equal housing opportunities throughout the nation

**ASI**



Accessible Space, Inc. (ASI): Sponsor, Developer and Management Agent

## SKY FOREST ACRES SOUTH LAKE TAHOE, CALIFORNIA

***Accessible, Affordable Apartments For Adults With Qualifying Disabilities***

750 Emerald Bay Road  
South Lake Tahoe, California 96150



**Accessible Space, Inc.**  
HOUSING WITH CARE



## SKY FOREST ACRES SOUTH LAKE TAHOE, CALIFORNIA

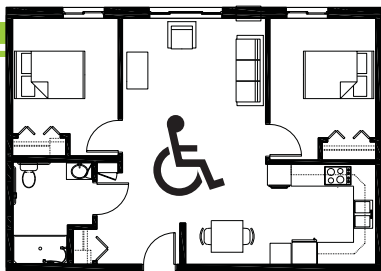
*Accessible, Affordable Apartments For Adults With Qualifying Disabilities*

### AFFORDABLE

- Qualifying households pay 30% of adjusted gross monthly income for rent
- Rent is subsidized by the U.S. Department of Housing and Urban Development (HUD)-Income limits apply
- Rent includes: Heat, water, sewer and trash

### BASIC QUALIFICATIONS

- One household member must have a qualifying disability
- Applicants are screened for credit, rental and criminal history
- Households must be income qualified (income limits apply and security deposit required)

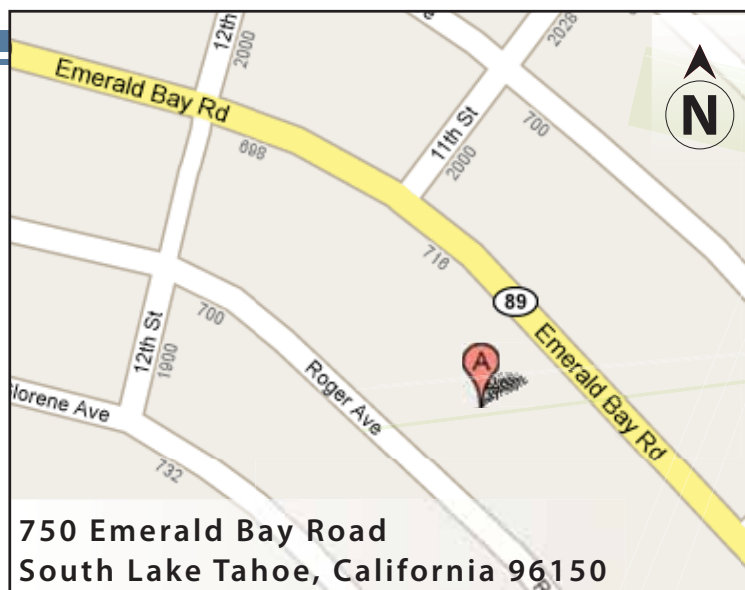


### APARTMENT FEATURES

- 17 accessible, one & two bedroom apartments
- Wheelchair accessible, spacious kitchen
- Large, accessible bathroom with roll-in shower
- carpeted bedroom and living room
- Generous closet & storage space
- Approved pets welcome! (with additional deposit)

### BUILDING FEATURES

- Large open entry & lobby
- Controlled access entry system
- Community room
- Elevator service
- On-site laundry facilities
- Off-street parking



### CONVENIENT NEIGHBORHOOD LOCATION

- Grocery stores, shopping & restaurants
- Banking Services
- Hospitals, medical & professional clinics
- Churches

**For more information or to request a housing application, please call**

- toll-free 1-800-466-7722
- tty/tdd 1-800-627-3529

**Apply online** [www.accessiblespace.org](http://www.accessiblespace.org)

**Accessible Space, Inc. (ASI)**

2550 University Avenue West, Suite 330 North  
Saint Paul, Minnesota 55114

